

2023 ANNUAL REPORT



ALBUQUERQUE
COMMUNITY
FOUNDATION

trust • equity • integrity • accountability

inspired
IMPACT



Albuquerque Community Foundation would like to acknowledge Mr. Bill Lang of the Albuquerque Journal for donating the cost of printing for this report.

Every effort is made to maintain accurate records; however, mistakes may occur. If you feel your name should have been listed or is misspelled, please accept our apologies and contact the Foundation so we have correct information for future publications. The Foundation maintains a system of internal accounting controls designed to provide responsible assurance that transactions are properly executed and recorded in all material respects, assets are safeguarded and established policies and procedures are carefully followed.



Our Mission

is to serve our community by mobilizing and stewarding resources to create equitable opportunity for all.

About The Foundation	04
Chair Letter	05
CEO Letter	06
COO Letter	07
Community Leadership Letter	08
Annual Grant Cycle	09
Animal Protection NM	10
Downtown ABQ MainStreet	12
El Centro	14
Enlace	16
Rebuilding Together	18
SIPI	20
Additional Grant Programs	22
Scholarships	24
Donors	26
Giving Circles	38
Profiles In Philanthropy	44
Events	52
Financial Summary	56
Meet The Foundation	60
Corporate Partners	67

table of CONTENTS

community is our FOUNDATION



2023 Highlights by the Numbers



Received
contributions
totaling

\$15M



Since 1981, we've been on a mission to serve our community by mobilizing and stewarding resources to create equitable opportunities for all. We're about supporting Albuquerque and the surrounding four counties by teaming up with donors, nonprofits, funders and community leaders.

From scholarships to housing support, we're making sure that resources reach those who need them most. No donation is too big or small—when we pool our resources, the impact is not just significant, but also inspired and forever.

Grew **assets under management** to over

\$161M



Awarded
in
grants

\$16M



Reflecting on the Year

Updated the Foundation's **Mission** for the first time in 42 years

Established the first **Chief Operating Officer** position

Had the **first person of color in executive leadership**

Launched the **PRIDE Circle** to support the LGBTQIA+ community

Celebrated the **10th Anniversary** of the Great Grant Giveaway, raising over \$600,000 for 7 nonprofits

Hosted the first ever **Party to Enhance Equity in Philanthropy (PEEP)** event to increase networking between donors, nonprofits and Trustees

Established the first ever **Community Leadership Department** in the Foundation's history

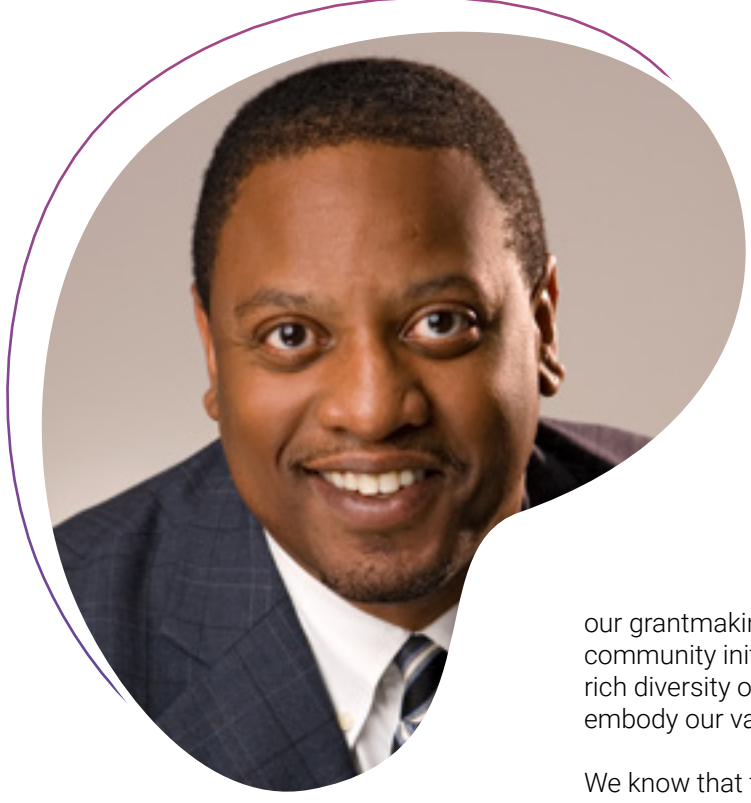
Merged the **Development and Marketing** departments to increase efficiency in donor engagement

Installed the **"Pueblo Matriarch" at the Indian Pueblo Cultural Center**, a public art piece commissioned to celebrate the Foundation's 40th Anniversary

Added **Animal Welfare** as an Annual Grant Program field-of-interest

Launched the **New & Emerging Leaders Program** in collaboration with United Way of North Central New Mexico through DEI United

Reestablished the Foundation's **Lunch & Learns**



letter from our **CHAIR**

As we reflect on this past year, one word stands out: inspiration. At the heart of the Albuquerque Community Foundation, we see the powerful impact that collaboration, commitment and community have on our collective mission. This year, in particular, has been transformative for our organization as we continue to grow, innovate and deepen our dedication to creating equitable opportunities for all. That makes the theme of our annual report, *Inspired Impact*, even more relevant as we recognize the changes within the organization and celebrate the incredible organizations at the center of our communities.

At a time when diversity, equity and inclusion are being challenged, the Board of Trustees and staff have prioritized integrating these values into the core of our organization. We embraced the Groundwater Institute's curriculum to deepen our understanding of racism and inequity and the systemic causes of inequality. This training has reinforced our commitment and prompted us to reassess and refine our policies to ensure they are truly inclusive and equitable, as well as ensure that

our grantmaking, partnerships and community initiatives not only reflect the rich diversity of our community but also embody our values.

We know that the solutions to our community's most pressing challenges are found in the diversity of experiences, perspectives and voices we uplift through our work. Our mission is to serve the entire community, and we invite you to support our efforts to embed dEi into every facet of the Foundation's culture and work. In 2023, we reached a pivotal moment in our 42-year history with the unveiling of our new mission statement. This change represents our vision to serve our community by mobilizing and stewarding resources to ensure equitable opportunities for everyone.

Our mission not only reaffirms the work we've been doing but also opens the door for new possibilities and greater impact in the years ahead. Read Randy's letter (pg. 5) to learn more about our new mission statement and how it will shape the Foundation's work for years to come.

This year, we also continued to grow both in scope and capacity. As Marisa shares in her letter (pg. 7), the Foundation now has its largest staff ever, as well as the new Community Leadership Department. We are also strengthening our partnerships as we bring together individuals, corporations, and government entities to address urgent community needs. Our work has evolved to where we are not only providing financial support

to organizations and the communities they serve but also serving as a trusted resource and a conduit for collaboration.

As we look ahead, the Board of Trustees is more inspired than ever to continue our role in creating real impact. Together, we are building a future where opportunities are abundant and accessible to all. We are privileged to serve alongside so many passionate and committed individuals and organizations who share our vision for a thriving, equitable Albuquerque. Thank you for your continued support as we strive to make dEi an integral part of our Foundation's DNA and continue our legacy of *Inspired Impact*.

Marcus Mims
2023 Board Chair



letter from our CEO

Albuquerque Community Foundation, like other community foundations around the country, must evolve to thrive. That's why 2023 was a transformative year, underscored by a significant moment for the Foundation: the update to our mission statement. This first update to our guiding principles in our 42-year history was the culminating step in a strategic planning process begun back in 2021.

The updated mission—to serve our community by mobilizing and stewarding resources to create equitable opportunity for all—remains true to what we do and who we serve, amplifying and codifying years of gradual and deliberate momentum to capture the breadth of our work and the possibility of impact in the future. This is underscored by the fundamental relationship-building and initiatives to address the full scope of our work in our three key areas: grantmaking; bringing together individual, government, municipal and corporate partners to address immediate community needs; and convening

conversations about the systemic causes that create longstanding community issues.

This new mission statement shouldn't seem unfamiliar to anyone who follows the philosophy and direction of our work. Rather, it is our acknowledgement of how community foundations across the nation continue to evolve toward values-informed philanthropy, our deep commitment to diversity, equity and inclusion, and a reflection of our vision for the greater Albuquerque community.

As I consider our directive to steward and mobilize resources, what resources are we stewarding and mobilizing? A simple answer might lie in financial resources, which we certainly do through grantmaking, administering and increasing donor funds, and growing our endowment. Perhaps just as important are the people we connect to bring the mission to life. One of the great privileges of our work is having a bird's-eye view of the community to convene groups whose paths might not otherwise cross, but whose goals are aligned. Because diversity is the strength of and inspiration for our community, and holds within it the solutions to urgent needs and systemic issues.

As always, nothing we do would be possible without the support and guidance of our Board of Trustees, the generosity of our donors, our corporate and governmental partners, and our nonprofit partners. I'm filled with immense gratitude for the many individuals and organizations who help make our work in this incredible community possible. Thank you for your confidence and courageous leadership as the Foundation continues to grow and evolve to meet the changing needs of our community.

Randy Royster
President & CEO

letter from our COO



How do we continue to grow as a Foundation? That was the question we asked ourselves in 2023, informed by our new mission statement (see Randy's letter). And grow we did, in our donor advised funds, grantmaking and scholarships, and commitment to ensuring the Board and Staff reflect the community we serve.

This year, Foundation staffing levels hit an all-time high with 17 full-time employees. One of those added employees heads the new Community Leadership Department (see Celia's letter on pg. 8), formed to act on our commitment to mobilizing resources to address the root causes of systemic community issues. The department's goal is to expand our previous efforts to support the impact of our grantmaking by:

1. exploring intermediary collaborations and bringing more national philanthropic and federal dollars into New Mexico;
2. growing our impact investment work; and
3. committing to public policy and advocacy efforts more intentionally. For a broader understanding of the powerful Community Leadership movement among community foundations, visit go.abqcf.org/communityleadership.

Enlarging the capacity of our staff allowed us to dig deeper into our core areas, too. As part of our focus on creating opportunities for our community, and in partnership with United Way of North Central New

Mexico and funded by the W.K. Kellogg Foundation, we supported the Community Wealth Building Cohort, a collective of 11 community organizations. These organizations are seeking to be a unified voice to identify and address injustice, systemic racism and underinvestment in small Black, Indigenous, and People of Color (BIPOC) organizations, which face a significant disadvantage when pursuing funding. These organizations educate, elevate and further empower the least, the lost and the left out, yet are chronically underfunded and under-trusted despite their front-line successes in addressing poverty, food insecurity and economic opportunity for their constituents.

Lastly, we stand ready to activate our emergency response protocols when the need arises to address unexpected, urgent crises like pandemics, wildfires and other unprecedented events. A guiding principle of the Community Leadership movement states that community leadership happens when community foundations move beyond grantmaking and act as valuable partners that driving positive change in the area(s) they serve. In addition to facilitating philanthropic transactions, community foundations also embrace a broader role in addressing community

needs and drive positive change. The Foundation's ability to grow is only possible with the tireless dedication of staff, our generous donors, corporate and institutional partners, and the organizations whose services impact the community. We cannot forget our Board, who spent hours learning how the Foundation can use its voice to encourage future change in a more systematic way, too.

We're excited to grow the way we approach the important work of encouraging a thriving community for another four decades and beyond.

A stylized blue ink signature of Marisa Magallanez.

Marisa Magallanez
COO



letter from our **COMMUNITY LEADERSHIP DIRECTOR**

A

s the newest department at the Foundation, the Community Leadership Department was created in 2022 as

part of the Foundation's strategic plan, responding to a national movement in community foundations to address root causes of poverty, racial inequity and other societal harms. I joined as the first Director in 2023, and our team now includes Danielle Griego, Senior DEI Associate, and Liana Schmader, Intermediary Projects Manager.

Our goal is to go beyond grantmaking, using all the Foundation's resources to foster positive change centered on diversity, equity and inclusion. We are committed to the following guiding principles:

- Accelerating positive change
- Serving as a catalyst for justice and equity by addressing systemic issues
- Centering equity both internally and externally
- Focusing on the most critical issues for maximum impact
- Aligning strategic thinking and creative solutions
- Using our power and privilege to amplify voices and support local collaborations

To achieve this, we focus on three main areas: intermediary collaborations, impact investing, and public policy and advocacy.

1. **Intermediary Collaborations:**

Building on our federal Housing Stability grant program, we plan to expand partnerships and bring more national and federal funds to New Mexico, while exploring new issue areas.

2. Impact Investing: We aim to align our investments with our broader community impact goals, prioritizing social returns over financial gains. Our impact investment committee, supported by the Board of Trustees, will continue evolving toward greater alignment and strategy.

3. Public Policy and Advocacy: We are committed to addressing root causes of issues. Over the past year, we've conducted research including surveys to grantees, one-on-one meetings with advocates and participation in national learning sessions.

We also host, support and participate in numerous collaborative gatherings, such as statewide housing meetings, strategy meetings with housing advocates and public policy strategy sessions with funders. Additionally, we support intermediary grant recipients, wellness programs for nonprofits, DEI-focused peer circles and a monthly podcast learning series for Foundation staff. Our DEI United partnership with United Way of North Central New Mexico continues to be a key initiative.

We approach this work with humility, eager to learn from community experts while recognizing the power we hold to influence and support meaningful change. We are excited to grow this department and remain steadfast in our commitment to our values.

Celia Yapita
Community Leadership Director

annual
GRANT CYCLE



Animal Protection New Mexico (APNM) is dedicated to advancing the cause of animal protection and welfare by creating social change resulting in the humane treatment of all animals. APNM establishes policies, infrastructure and services that not only safeguard animals but also strengthen our communities. By designing and implementing humane and pragmatic solutions, APNM addresses some of the most challenging issues surrounding animal welfare.

"Our mission is clear: to protect animals and support communities," says Victoria "Vicki" Murphy, Program Director. "Every day, I am inspired by individuals who prioritize their companion animals' needs over their own, and by my colleagues who make a difference in the lives of animals and their caretakers. Together, we are creating a more compassionate world."

APNM's unwavering dedication is evident in the impactful work across its nine programs. Over the past year, APNM has made significant strides in animal welfare by distributing over 96,000 pounds of emergency food to 4,300 animals, providing \$239,939 in aid to 1,743 equines and 1,019 guardians, and offering emergency services to 203 companion animals of domestic violence survivors. Their humane education program enlightened 1,216 students about animal neglect and abuse, while a collaboration with the City of Albuquerque led to a wildlife coexistence campaign. APNM also enhanced animal protection by awarding 68 training scholarships to 34 animal control officers, distributing 960 culturally appropriate plant-based meals and fielding 511 calls through their animal cruelty helpline.

These efforts have not gone unnoticed. New Mexico recently moved up nine places in the Animal Legal Defense Fund's state

rankings of animal protection laws. This improvement, from 50th to 41st place, reflects the passage of significant legislation such as the anti-bestiality bill and a broader recognition of New Mexico's efforts to ban coyote killing contests and restrict harmful traps on public lands.

The needs of New Mexicans have increased due to the pandemic, natural disasters and rising inflation; sometimes the needs of animals go unmet. APNM has met the increased needs of the community by expanding programs such as equine feed and veterinary services, delivering plant-based foods to vulnerable populations and providing emergency disaster response.

"The human-animal bond is incredibly powerful," notes Nina Eydelman, Chief Program & Policy Officer of Equine & Wildlife Programs. "People often share how their horses are family, providing emotional and spiritual healing. I am inspired by Tribal and Pueblo agency staff who, despite being overstretched and underfunded, embrace innovative and humane solutions. It's an honor to be part of these solutions and contribute to rectifying centuries of systemic injustice against First Nations."

The tireless efforts of APNM are fueled by inspirational stories from across New Mexico. Alexis Johnsen, Program Manager, shares, "I am most inspired by the perseverance of those we help. Despite facing financial hardship, domestic abuse and trauma, they

reach out with hope that things will improve for them and their communities." Judy Wolf, Chief Humane Communities Officer, echoes this sentiment, "I am inspired by the dedication of our shelter staff and volunteers who serve animals with love and compassion, sometimes up to and through their dying moments."

Alan Edmonds, Cruelty Response and Advocacy Director adds, "We're inspired by the compassionate people who safeguard animals—elected officials, animal welfare officers, veterinarians, local advocates and residents. Their tireless support benefits and protects the animals in their communities."

By promoting animal welfare, APNM is not only protecting animals but also enhancing the quality of life for many people.

"Animals have the incredible ability to bring us together, improve our mental health and put smiles on our faces," Murphy concludes. "We need to protect them by supporting animal protection legislation, getting involved in the community and making everyday changes. I am honored to work with advocates across the Land of Enchantment to create a more humane New Mexico."

animal protection
NEW MEXICO



In her inaugural year as the director of Downtown ABQ MainStreet and Arts & Culture District, Danielle Schlobohm reflects on 2023 with a sense of pride and optimism, calling it a year of ideas and growth. "New Mexico has the most main streets of any state," Schlobohm notes with pride.

Schlobohm's journey with Downtown ABQ MainStreet began in 2019 at the Growers' Market. Now, in her first full year as director, she navigates a unique role that is part developer and part organizer. Downtown ABQ MainStreet functions as a bridge between the community and the government, striving to support the downtown district, which spans 80 blocks. Founded in 2013, the New Mexico MainStreet program aims to engage people, rebuild places and revitalize economies, which leads to economically thriving downtowns, greater business and employment opportunities and an enhanced quality of life.

Separate from the Downtown ABQ MainStreet is the Downtown Albuquerque Arts & Cultural District. This initiative, both a place and a program, covers 30 blocks and supports the creative economy of Downtown Albuquerque through promotional support, funding and partnerships. It has been state-designated since 2016.

The two most well-known projects of Downtown ABQ MainStreet are the Downtown Growers' Market in Robinson Park and Artwalk. "I can't imagine Downtown without the Growers' Market and Artwalk," Schlobohm says, underscoring the deep-rooted significance of these events.

ArtWalk is more than just a First Friday gallery opening. "It's an intentional program," Schlobohm says. Now in its sixth year, Artwalk benefits the entire downtown community. "Artists make

between \$200 and \$1000 a night and businesses typically report double in sales and double in foot traffic for the month."

The Downtown Growers' Market, the longest-running farmer's market in the area, began in 1996 in Robinson Park. "You can shop the largest selection of local farmers and ranchers in Albuquerque!" Schlobohm exclaims. Supporting small farmers and providing fresh food options and food assistance to families living downtown is a priority. The market annually hosts 60 New Mexican farmers and ranchers from 10 different counties, each bringing their unique knowledge, flavor and personal touch to the plants they grow, animals they raise and bees they tend. "The entire community waits for it to open every single year," she adds, noting the market's deep connection with the community.

Over 50 businesses have launched from the market into storefronts, including The Burque Bakehouse, Buen Provecho, Blue Door Patisserie, Little Green Bucket, Tino's Tacos, La Cocina De Maria and Las Golondrinas Pie Company, now in Barelás Coffee House. "It's so essential to the community now. We want to make sure it continues to be available," Schlobohm asserts.

Schlobohm reflects on her role, "My favorite part of the job is helping make the connections." She recounts how High Dessert and Sanitary Tortilla are now collaborating on a new project. "I'm constantly trying to make new introductions and connections." "The staff is amazing—dedicated to the work and the neighborhood too. They care about downtown. Many people don't treat it just as a day job—they live here, work here, and play here," Schlobohm shares, emphasizing the deep connection the team has with the area.

Looking ahead, Schlobohm acknowledges the challenges of the upcoming year. The market, now in its 28th year, is growing and may need to spin off on its own. "If people love downtown, if they love food, if they love art, we are doing the biggest chunk of it downtown."

downtown abq MAINSTREET



In the vibrant heart of Barelás, El CENTRO de Igualdad y Derechos stands as a beacon for worker justice. With over 5,500 members primarily composed of low-wage Latinx immigrant workers, El CENTRO is dedicated to transforming the landscape of economic and workforce development through leadership development, policy advocacy, voter engagement and strategic communications, all aimed at fostering a more inclusive economy.

"The COVID-19 pandemic starkly highlighted the existing racial and economic inequities," explains Rachel LaZar, Executive Director of El CENTRO. "Immigrant frontline workers, deemed essential, were ironically excluded from economic relief, dignified wages, and health and safety protections." In response to this injustice, El CENTRO, along with its partners, formed the New Mexico Economic Relief Working Group in 2020. They launched the "Somos Esenciales" (We Are Essential) campaign, striving to ensure that the very workers who sustain local economies have the same opportunities for their families to thrive.

The journey toward this inclusive economy has deep roots, stretching back 25 to 30 years. "When we look at our past campaigns—whether it's early childhood education, workers' justice, dignified wages or paid sick leave—each year builds on the last," LaZar notes. A significant milestone came in 2021 when tax reforms began to include mixed-status families and undocumented workers, reflecting the crucial role that low-wage immigrant workers play in the economy.

Since the pandemic, El CENTRO has refined its organizing process, focusing on growing its leadership pipeline. "We've been recruiting and meeting people where they are, hosting 'cafecitos' and reinstating bi-weekly worker orientations," LaZar says. These Know Your Rights workshops inform community members about their rights and options for taking action. Forming workers' committees has reinvigorated the

organization, transforming participants from passive recipients of information into active agents of change. "During the pandemic, it was about maintenance. Now, we can do widespread recruitment."

Their policy work is equally impactful, particularly in economic development and early childhood education. In the last legislative session, El CENTRO worked to ensure that funds from the federal emergency COVID-19 response earmarked for early education reached their intended targets, that childcare workers retained their raises post-pandemic and that early educators are able to keep up with certifications.

With their advocacy partners, El CENTRO designed a feasibility study for unemployment insurance for exempted workers, including undocumented and independent contractors. "Many didn't qualify for federal relief," LaZar explains. "We're working long-term to shift the state's safety net benefits to include immigrants, who contribute and pay taxes just like any other workers."

El CENTRO's groundbreaking Guaranteed Basic Income (GBI) study, conducted with New Mexico Voices for Children, used a community-driven approach. Members were trained to conduct qualitative data collection for focus groups. "We use data to take a less paternalistic approach to safety net benefits," LaZar says. "The current system places the burden on poor people to prove their poverty. We intend to shift this paradigm."

They found that GBI can address workforce shortages in education and healthcare and can also uplift workers who need to balance jobs and further their education. "If folks are already working two jobs and need to go back to school for certification, this can support them," LaZar notes. She sees the way it can uplift the whole family, facilitating economic stability, upward mobility, housing stability and educational attainment. "Parents were able to spend more time with their children and help with homework."

For LaZar, the true inspiration comes from the membership. "It's incredible to support people as they see themselves as agents of change and part of a broader movement." Over the years, witnessing systemic changes that were historically inaccessible to the members has been transformative. "Seeing our members show up at tax and budget hearings fundamentally shifts the narrative around their contributions."

El CENTRO's relentless efforts and the unwavering spirit of its members continue to drive progress, ensuring that immigrant workers are not just part of the conversation but are also at the forefront of the movement for a just and inclusive economy. "We're not just advocating for workers' rights; we're fundamentally shifting narratives and achieving systemic changes in New Mexico."

el
CENTRO



Enlace Comunitario is more than just a domestic violence service provider in Central New Mexico; a beacon of hope and support, fostering resilience and empowerment within Central New Mexico's Latine and immigrant communities. They are not just addressing domestic violence but also transforming lives one family at a time. Since its inception in 2000, Enlace Comunitario has focused on meeting the critical needs of domestic violence survivors, particularly within the Spanish-speaking immigrant community. The organization's holistic approach to intervention includes crisis intervention, case management, housing assistance, therapy, life skills and parenting classes, financial capability training, workforce development support and legal services. On the prevention side, Enlace Comunitario operates at both community and household levels, offering support groups, leadership development training and educational outreach.

Over the years, the organization has remained steadfast in its mission to provide culturally and linguistically tailored services while extending support to any domestic violence survivor in need. When 1 in 4 women and 1 in 3 men in New Mexico will experience domestic violence and 1 in 4 violent crimes in ABQ involve domestic violence, the services are necessary.

What sets Enlace Comunitario apart is its staff. Remarkably, 20% of the staff are former clients, who bring an invaluable perspective of relatability and trust to their work. Many staff members have personal experience with domestic violence, enhancing their cultural acuity and their ability to connect deeply with the community they serve. This lived experience is crucial, especially when addressing the multifaceted and intergenerational nature of domestic violence.

"Enlace trains Latine and immigrant youth witnesses and/or survivors

of domestic violence to become peer educators. All participants are volunteers (ages 13-17), and many are former Enlace clients," shares Matt Mirarchi, Director of Advancement & Operations. The Youth Leaders program not only builds leadership and networking skills but also promotes healthy, gender-affirming relationships among peers, significantly reducing the likelihood of youth engaging in domestic violence-affiliated behaviors such as gang involvement or teen dating violence. This program's success is evident; area charter schools eagerly host these programs and many more schools are on a waitlist, highlighting the community's demand for these vital classes.

Each year, Enlace Comunitario delivers direct intervention services to over 650 families, extending its impact further through community outreach and educational programs. The organization's capacity has increased in each department, allowing them to formalize and expand three critical programs: housing assistance, immigration support and workforce development.

Housing is a fundamental need, and Enlace Comunitario's program provides up to two years of housing assistance, addressing a crucial gap for survivors. The immigration program, honed over the years, is awaiting U.S. Department of Justice accreditation for Enlace and their paralegal, who will become a U.S. Department of Justice representative to assist with U.S. visas and Violence Against Women Act cases. These programs are designed to position clients for self-sustainability,

an essential step in their journey towards reclaiming their lives. "The work is iterative—it takes a long time," Mirarchi reflects. "Through therapy, legal support, workforce development and understanding how abuse manifests—it's not just physical. That's something we see time and time again—survivors recognize the extent to which they had been denied power in certain areas of their lives. To see them reclaim that power on their own terms, and to support them on their terms is incredibly rewarding."

The impact of Enlace Comunitario's work is profound. They recently closed a four-year-long legal case for a client seeking custody of their children. Mirarchi also recalls a client who recognized unhealthy behaviors in their relationship and, at 80 years old, secured a divorce and removed themselves from that situation. "Every survivor's timeline is different," he emphasized.

There is immense pride in witnessing the transformations facilitated by Enlace Comunitario's direct services team. "There's such a lack of empathy and compassion and understanding in the world today. We get to see the self-empowered transformation that clients undergo as they get more resources. They develop confidence. Seeing that ripple continues to give us hope."

enlace
COMUNITARIO



Rebuilding Together Sandoval County (RTSC) was founded in 1999 with a simple mission: gather volunteers every April to complete a home repair project for a neighbor in need. As an all-volunteer non-profit organization, RTSC provides no-cost home rehabilitation to preserve affordable housing and prevent homelessness in Sandoval County. By partnering with the community, RTSC rehabilitates the homes of elderly, disabled and low-income residents, which allows them to live safely and independently.

Since its inception, the organization based in Rio Rancho has completed over 200 renovation projects across Sandoval County. These projects range from simple, seasonal repairs like fixing a furnace or air conditioner or installing a shower rail to more complex renovations that significantly enhance a homeowner's quality of life.

During COVID-19, RTSC was forced to adapt its operations. Previously relying solely on volunteers, they transitioned to paying contractors, who were considered essential workers, to continue providing necessary services. This shift required securing additional funds and government grants, allowing RTSC to expand its budget, take on more repairs and manage more volunteers. Recognizing the need for leadership, they also hired staff and most recently, an executive director.

Mark Ryerson, Executive Director, and Bradley Wood, Board President, have both witnessed the dire living situations many residents face and how small issues compound over time to create larger problems in a home. As a real estate agent, Mark has seen firsthand how those unable to afford necessary repairs often live in miserable conditions for years at a time and can become hopeless. His experience on the board of the Roadrunner Food Bank highlighted how

many people in Bernalillo and Sandoval counties live on the margin, where one unexpected expense can create desperate situations, such as choosing between buying groceries or paying the mortgage.

"These are our neighbors and sometimes you'll never know what they are going through," Ryerson said.

Ryerson's commitment to RTSC was solidified when he was on his hands and knees cleaning out trash under a home to build a wheelchair ramp. "The sense of freedom and care a simple repair provides homeowners, who can now enjoy a functional home, is immeasurable."

One memorable project involved repairing a retired woman's home that had insufficient water pressure. Her shallow well's pump was broken, leaving her unable to wash dishes or even take a proper shower. She had to purchase water and maneuver large jugs just to have access to clean water. As a retiree living on less than \$1,000 a month, the extra cost of buying water strained her limited budget. This repair, seemingly small, significantly improved her daily life and financial stability.

Dana Oliveri, Program Manager, recalled a family that hadn't had heat for seven years due to non-functional gas lines, which had been intentionally damaged in an abusive situation.

RTSC replaced the roof, built a wheelchair ramp and fixed the gas lines, transforming the family's living conditions. "It's an intimate experience going into someone's home. You can see other issues that they may or may not tell you about in an office setting." The effects of COVID-19 still linger in their clients' lives, and the rising cost of homes and repair materials has made it increasingly difficult for many residents to afford necessary maintenance. RTSC addresses this by promptly fixing issues, such as replacing leaking hot water heaters, and allowing homeowners to redirect funds towards other essential expenses like medical bills.

RTSC is committed to more than just making repairs. We are rebuilding lives," Ryerson said. By ensuring that residents can live in safe and well-maintained homes, they provide a foundation for a better quality of life. Their work embodies the spirit of community and the belief that everyone deserves a safe and comfortable home.

rebuilding together
SANDOVAL COUNTY



Albuquerque is home to an important institution dedicated to the progress and success of Native Americans across the U.S.—the Southwestern Indian Polytechnic Institute (SIPI). Established in 1971 as a vocational training center, SIPI has evolved into a premier tribal community college dedicated to fostering education and training in science, technology, engineering and mathematics (STEM) along with several vocational and technical programs. Adam Begaye, Chair of the Board of Regents, encapsulates the spirit and mission of SIPI with a passion that resonates deeply within the community.

“SIPI is not just an educational institution; it’s a bridge between tradition and innovation, offering our students the tools they need to succeed in a rapidly changing world while staying connected to their cultural roots,” Begaye says.

SIPI’s curriculum is comprehensive, offering certificates, associate degrees and transfer programs in fields such as engineering, computer science, business, environmental science and culinary arts. This breadth of programs meets the growing demand for professionals in these critical areas.

However, the commitment to education at SIPI extends beyond academics. The institute collaborates closely with numerous Native American tribes and communities to develop curricula that address the specific needs and interests of Native American students. This partnership ensures that cultural awareness and sensitivity are woven into the fabric of campus life, creating an inclusive and supportive environment where students can thrive.

“As Native Americans, we are very tied to our homeland and culture. At SIPI, we strive to create an environment where

students not only gain knowledge but also feel a sense of belonging and support. Our goal is to ensure that while they are away from home, they still feel connected to their cultural heritage and community,” Begaye emphasizes. This holistic approach is critical for students who often feel the pangs of homesickness. For many Native American students, leaving their homeland and cultural environment for education can be a daunting experience. SIPI addresses this by offering robust support systems that help bridge the gap between home and campus life. Students receive friendship, mentorship and cultural connection.

“When students pursue education away from their culture, it’s easy for them to feel isolated. We ensure they have the support they need to feel safe, loved, and cared for, making SIPI a home away from home,” Begaye states.

SIPI’s dedication to student welfare is evident in its emphasis on creating lifelong connections. The institution’s development office, along with the board of regents, works tirelessly to provide opportunities for students to build lasting relationships within their community. This network of support is crucial for their personal and professional growth.

“Education is more than just grades. It’s about impacting hearts and minds. Our students may forget the grades they received, but they will never forget the engagement and support they experienced here,” Begaye asserts.

The commitment to student success at SIPI is unwavering, even while facing challenges lingering from the COVID-19 pandemic. “We understand the broader needs of Native American communities,” Begaye shares. Access to clean water,

broadband and healthcare, which were already stressed, were put further out of reach during the pandemic. These are essential components for building a sustainable future for students and their families.

“We’re also supporting the necessary 21st century infrastructure needs,” Begaye explains. “Many of our students don’t have broadband access at home, which is crucial for their education. We rely on partnerships to connect our students and provide them with the resources they need.”

SIPI’s mission goes beyond education; it’s about transforming lives and building a brighter future for Native American communities. As Begaye profoundly puts it, “No one gets there alone—especially our tribal students. It’s vital for our board and the community to show up for our students and support them in all aspects of their journey.”

With a steadfast commitment to trust, equity, integrity and accountability, SIPI continues to be a pillar of strength and opportunity, guiding students toward a future where they can make a significant impact in their homelands and beyond. “We’ve faced struggles, especially during the pandemic, but we remain strong and resilient,” Begaye says. “We’re here, expecting success, and working to provide the best for our students.”

southwestern indian
POLYTECHNIC INSTITUTE



The New Mexico



New Mexico Funders Collaborative



educate2elevate



SIEMBRA LEADERSHIP HIGH SCHOOL

The New Mexico Funders Collaborative, a network of statewide funders committed to pooling time, energy and resources for the betterment of New Mexico communities, is guided by a shared belief that we are stronger together and that working in partnership can create long-term systemic change.

The Collaborative's educate2elevate (e2e) grant aims to empower organizations that tackle educational inequities and support community development. This year, Siembra Leadership High School and United Voices for Newcomer Rights (UVNR) each received an e2e grant, exemplifying how community-centric initiatives address educational needs,

encourage marginalized voices and fuel social change.

Siembra Leadership High School's mission is to empower academically underserved students for entrepreneurial careers. With the e2e grant, Siembra enhanced its evening school program to help students up to age 24 to finish high school in the face of daytime work and/or family responsibilities. The funding provided support for staff, technology for students, assistance with vital documents for youth experiencing homelessness and a clothing closet that ensures students receive brand-new items to meet their needs.

When asked what inspires the school about community, Roslynn Gallegos, Chief Development Officer, emphasized that the collaborative e2e funding underscores the belief that every person is valued



FUNDERS COLLABORATIVE

and cared for while highlighting how collective investment has the power to create profound change, fostering resilience and long-term impact.

The second grantee, UVNR, works to improve the lives of refugees, asylum seekers and other immigrants that have recently arrived in the U.S. by addressing both immediate and long-term needs for individuals and families. It used the grant to establish a Youth Community Advisory Council to focus on mental health issues affecting newcomer youth and their families. This program empowered 40 youth from diverse backgrounds—mostly Muslim, Arabic-speaking, African and/or Afghan—by providing participant stipends and facilitated discussions on critical community topics such as bullying and discrimination. Photo projects, panel and group discussions, financial literacy workshops and other activities encouraged students to share their experiences and express concerns

about the root causes of poor mental health in their communities.

UVNR Co-Executive Director, Danielle Parker, described how inspiring it was being supported by the communal nature of the e2e grant, explaining that the funding's flexibility allowed them to create an impactful program without excessive restrictions. Rachael Mwadi, Youth Empowerment Specialist, noted the inspiration she draws from the community, "The youth were able to build confidence and make change in their community by talking about their challenges. That's the biggest inspiration for me, because they are the next generation."

To learn more, visit nmfunders.org.

SCHOLARSHIPS

Each year, the Foundation awards scholarships to students throughout New Mexico. With over 25 separate student aid programs made accessible to New Mexico residents, the Foundation helps students attain their educational goals.

In 2023, we awarded...

- **\$187,000+ in scholarships**
- **scholarships to 69 students total**
- **scholarships to 31 students statewide**
- **scholarships to 38 students in Bernalillo, Sandoval, Torrance, and Valencia counties**

Andrew Piech Memorial Scholarship

for graduating high school seniors or current college students who are pursuing a career in the automotive or vocational tech fields.

Barnes W. Rose Jr., and Eva Rose Nickol Scholarship for Albuquerque High School (AHS) students pursuing a college degree in the fields of science, technology, engineering or math.

Bob Chavez Scholarship for the Arts by the Indian Pueblo Cultural Center for Indigenous students interested in the study of the visual arts.

Bryan Cline Memorial Soccer Scholarship for one male-identifying and one female-identifying Eldorado High School graduating senior who participated in varsity soccer.

Carl F. Scott Scholarship for Tucumcari Lodge #27 A.F. & A.M. for Quay County students graduating high school or currently enrolled in college.

David R. Woodling Memorial Scholarship for students pursuing a career in metal or welding technology.

Davis-Kozoll Scholarship for high school, undergraduate and graduate students pursuing a degree in science or human services, or those who are preparing for non-scientific or human service employment in communities of northwest New Mexico.

Douglas Faust Blackledge Memorial Scholarship for Manzano High School boys varsity soccer players and members of the varsity wrestling team.

Hakes Brothers Scholarship Fund for single parents studying within the fields of science, technology, engineering, math (STEM), medical or accounting at the University of New Mexico.

James Knott Memorial Scholarship Fund Sponsored by the New Mexico Manufactured Housing Association for students living in a mobile or manufactured home.

James Ledwith Memorial Scholarship for students who have faced an extraordinary life challenge while continuing to pursue their dreams with hope, faith and courage.

Jim and Ann Nelson Student Aid Fund for Foster Youth for high school or college students who have been in the New Mexico foster care system for a minimum of one year.

Jonathan Sherman Spradling Memorial Scholarship for students with volunteerism and community service experience residing in Valencia County.

Joe "Isi" Trujillo Scholarship for a graduating senior from Hot Springs High School (HSHS) in Truth or Consequences, NM who will be attending a New Mexico public college, university or community college.

Kiwanis Club of Albuquerque Scholarship for students with community service experience; preference is given to students studying early childhood development and/or teaching and those who participate in Key Club.

Lynn Scholarship guidelines and criteria to come.

Manuel Lujan Excellence in Education Scholarship for graduating high school seniors of 24 designated high schools, who plan to continue their education full-time at a New Mexico four-year College or University.

Matthew Farley Memorial Scholarship for graduating high school seniors from Rio Rancho High who have demonstrated significant interest and achievement in biology.

New Mexico Press Women Scholarship for undergraduate and graduate students who want to study journalism or communications.

New Mexico Veterans' Memorial Foundation Scholarship for New Mexico graduating high school seniors who plan to attend college, university, community college or trade school and who have an interest in the Medal of Honor Core Values: courage, sacrifice, integrity, commitment, patriotism, and citizenship.

Nina J. Wing Scholarship for students who were previously in the foster care system and are currently attending or plan on attending Central New Mexico Community College.

Pedro and Mateo Sandoval Strong Memorial Scholarship for Moriarty High School (MHS) graduating seniors who are community-oriented and engaged in extracurricular activities.

Rae Lee Siporin Scholarship for women for those who are returning to college or university after an official break and are returning to complete their senior year of their first undergraduate degree.

Robby Baker Memorial Scholarship for La Cueva High School (LCHS) students with a learning, language or reading disability.

Ron and Jane Abramshe Scholarship for Native American Indian Students for Indigenous students to support educational and scholarly pursuits.

Susie Kubié Symphonic Music Scholarship for students who participate in the Albuquerque Youth Symphony Program who plan on pursuing a music-related degree.

Sussman-Miller Educational Assistance Fund for financial aid assistance to support the “gap” in student financial aid award packages.

The Pam Schneider Memorial Scholarship Presented by American Advertising Federation of New Mexico for students pursuing a degree in the field of marketing and communication.

William F. Mann Scholarship for graduating high school seniors with a strong community service background, preference is given to Albuquerque High School (AHS) students.

Women in Rhetoric and Logic Scholarship for graduating Albuquerque Academy female students participating in debate and pursuing a college degree.

Woodcock Family Education Scholarship Fund for Albuquerque metro-area high school graduating seniors of exceptional promise in the fields of science, technology, engineering and math.



endowment FUNDS

The Foundation manages over 500 endowment funds, each customized to meet each donor's philanthropic goals and the needs of the Albuquerque community. The Foundation offers a range of charitable fund types for individuals, families, organizations and businesses. Donors may establish their own endowment fund or contribute to an existing one.

Following is a list of the Foundation's endowment funds:

Funds Established in 2023

Robert Loughridge and Celeste Page Loughridge Endowment for Classical Music
Judy and Stephen Reuter Estate Fund
Napolin Family Fund
Shelly and Rick Andes Endowment Fund
Barry and Joan E. Glick Charitable Fund
Bloch Family Fund
David and Nichol Swift Fund for Human and Animal Healing
David N. and Ruthie Horn Robbins Fund
Joseph, Margaret and Peggy Jo Dietmeier Fund
Judy and Stephen Reuter Estate Fund
New Mexico Veterans' Memorial Foundation Scholarship
Nisly Charitable Impact Fund
Terrence and Kristina Sly Linton Fund
Robert Loughridge and Celeste Page Loughridge Endowment for the NM BioPark
Hawks Aloft Quasi Endowment Fund
Jonathan Sherman Spradling Memorial Scholarship Fund
Matthew Farley Memorial Scholarship
New Mexico Press Women Scholarship Fund

Donor Advised Funds

1 Sam 7:12, 2021
Albuquerque Community Foundation
Social Giving Club, 2015

Albuquerque Community Foundation
Now & Forever Fund, 2007
Albuquerque PRIDE Circle, 2022
Ann and Russell Rhoades Endowment Fund, 2006
Antram/French Fund, 2021
Arthur J. and Naomi C. Rosenberg Charitable Fund, 1997
Avery Fund, 2016
Barry and Joan E. Glick Charitable Fund, 2023
Becky and Rudy Diaz Endowment Fund, 2006
Better Albuquerque Fund, 2018
Beverly and Perry Bendicksen Legacy Fund, 2019
Bloch Family Fund, 2023
Bob L. Turner Family Endowment Fund, 2014
Building Community Fund, 2021
Carla Y. Aragon Fund, 2022
Carolyn Dooley Martinez Endowment Fund, 2006
Cavanaugh Young At Heart Fund, 2009
Chester French Stewart Endowment Fund, 2005
Cinco Amigos Endowment Fund, 2007
Cindi and Jerry Parker Endowment Fund, 2022
Club Culturale Italiano, Inc., 2022
Connor O'Loughlin Mantsch Memorial Endowment Fund, 2014
Cramer Family Endowment Fund, 2006
CTWCRW Fund, 2017
Daulton Family Foundation Endowment Fund, 2008
Dave Gives Back Donor Advised Fund, 2021
David and Nichol Swift Fund for Human and Animal Healing, 2023
David and Susan Weymouth Fund, 2021
David N. and Ruthie Horn Robbins Fund, 2023
Davis-Kozoll Donor-Advised Fund, 2018
Debbie and David Dozier Fund, 2014
Debbie Walters and Richard Armstrong Endowment, 2020
Debora Lynn Harms and Irwin Todd Harms, 2020
Di Gregorio Baci e Abbracci Endowment Fund, 2006
Don Blaugrund LGBT Fund, 2006

Donald E. Carnicom and Mina L. Koym Carnicom Endowment Fund, 2011
Doyel Family Endowment Fund, 2005
Dr. and Mrs. Sterling Edwards Family Education Fund, 1994
Dr. Barry and Roberta Cooper Ramo Advised Fund, 2001
E. Blaugrund Family Fund, 1994
Effective Families Fund, 2003
Elevate by Maestas Development Group, 2019
Erik and Veronica Olson Endowment, 2018
Eye Associates Gerald and Alice Rubin Memorial Foundation Fund, 2005
Ezra Trager-Tarrant Music and Education Memorial Fund, 2021
Frank and Dolores Hines Family Fund, 1997
Frank and Mickey Peloso Memorial Fund, 2007
Frank D. Schubert Fund for Aging Services, 2019
Frank Fine and Leslee Richards Endowment Fund, 2018
Frederick Hammersley Fund for the Arts, 2019
Future Fund Endowment of Albuquerque Community Foundation, 1997
Galles Chevrolet Friends of Youth Fund, 1988
Garcia Automotive Group Endowment Fund, 1999
George and Jenean Stanfield Fund, 2010
Goodman Family Endowment Fund, 2003
Gorvetzian Croker Family Endowment Fund, 2010
Greg and Diane Harrison Ogawa Family Fund, 2003
Hancock Family Fund, 2020
Hanna/Woodford Family Fund, 2013
Harrington Family Fund, 2018
HB Construction Endowment Fund, 2011
HENMAR Fund, 1998
Himalayan Progressive Education Fund, 2009
Hopkins Campbell Family Endowment Fund, 2012
Horizons Donor Advised Fund, 2021

Hospitality and Tourism Scholarship Fund, 2015
Howard Friedman & Debra Wechter Friedman Fund, 2020
Infinite Gesture Fund, 2016
Jack Grevey Memorial Fund, 2005
Jane and Doug Swift Fund for Art and Education, 1997
Jennifer Riordan "Sparkle" Fund, 2018
John and Kathleen Avila Family Endowment Fund, 2017
Jolly Family Foundation, 2011
Junior League of Albuquerque Charitable Endowment Fund, 1984
Kate Nanlohy Endowment in Memory of Charles Marko, 2009
Kea and Loa Fund, 2022
Kelli and Kevin Cooper Family Endowment Fund, 2006
Kevin and Lian Yearout Family Endowment Fund, 2009
Kimsteinerling Fund, 2021
King Family Endowment Fund, 2006
La Meristema Fund, 2018
Lanting Shibuya Fund, 2012
Lasso the Moon Fund, 2016
Lawrence Monte, Sr. Memorial Endowment, 2008
Lee Blaugrund Endowment Fund, 2005
Levy Family Endowment Fund, 2008
Loral and David Welde Forevermore Fund, 2021
Maggie's Giving Circle, 2006
Maisel/Goodman Charitable Endowment Fund, 2002
Margaret and Ted Jorgensen Donor-Advised Endowment Fund, 2007
Margaret Garrison Fund, 2021
María Griego-Raby and Randy Royster Charitable Endowment, 2021
Marie Kelly Gorham Endowment Fund for Women's Issues, 2006
Mesa Del Sol Education Fund, 2008
Michael Henningsen Youth Fund, 2014
Michael L. Danoff Memorial Scholarship Fund, 2021
Mike Mittelstaedt Memorial Fund, 2021
Napolin Family Fund, 2023
NDB and CEB Fund, 2017
New Mexico Heart Institute Foundation Fund, 2001
Nicholas C. Nellos Memorial Fund for At-Risk Children, 2002
Nina Forrest Fund, 2015
Nisly Charitable Impact Fund, 2023
NMOGA's Brighter Future Fund, 2019

Notah Begay III Endowment Fund, 1999
Novak MPGJ Family Fund, 2008

Para los Niños Fund, 1989
Parker Family Fund, 2019
Paul S. Moya and Mary Jo Garley Moya Memorial Fund, 2021
Pete & Mateo Sandoval Fund (NMAA), 2020
Philip's Family Fund, 2017
PNM Fund, 2021
Possibility Funds, 2021
Rashap Family Fund, 2016
Rich Diller Now and Forever Donor-Advised Fund, 2019
Richard J. and Linda N. Eitzen Endowment Fund, 2000
Royce Family Fund, 2017
Sandia Foundation and Estate of Hugh and Helen Woodward Endowment Fund, 2006
Sean Hopkins Fund, 2013
Shelly and Rafael Colon Memorial Fund, 2006
Shelly and Rick Andes Endowment Fund, 2023
Sofia Marie Pergola Memorial Fund, 2020
Steven J. Perich Memorial Fund, 2019
Sun Vista Legacy Fund, 2022
T & F Blueher Family Endowment Fund, 2019
T.J. Sivley and Mary Ray Sivley Education Fund, 1997
T.J. Sivley and Mary Ray Sivley Fund for Public Television, 1997
T.J. Sivley and Mary Ray Sivley Perpetual Endowment Fund, 1995
Tallman Family Endowment Fund, 2020
Team Tio Endowment Fund, 2011
Terrence and Kristina Sly Linton Fund, 2023
The Bright Futures Fund, 2014
The FUNd, 1988
THE REALTOR FUND of the Greater Albuquerque Association of REALTORS, 2011
The Robert P. Tinnin, Jr. and Elizabeth P. Madden Endowment, 2016
The Sage Fund, 2014
The Santangelo Family Fund, 2007
Three Hearts Fund, 2006
Tom Jenkins and Elaine Roy Fund, 2018
Verstella Biondi Charitable Endowment, 2018
Vitality Works Endowment, 2017
Walter and Allene Kleweno Fund, 2003
Walter and Mimi Stern Family Fund, 2019
Wilfred "Coach" Tull Endowment Fund, 2005

Field-of-Interest Funds

Alan Hudson Fund for Education, 2018
Albuquerque Community Foundation Arts & Culture Endowment Fund, 1984
Albuquerque Community Foundation Children & Youth Fund, 2002
Albuquerque Community Foundation Economic & Workforce Development Endowment Fund, 2014
Albuquerque Community Foundation Education Endowment Fund, 1984
Albuquerque Community Foundation Health Fund, 2015
Albuquerque Community Foundation Human Services Fund, 2001
Albuquerque Community Foundation Preservation Fund of New Mexico, 1984

Albuquerque Monthly/Coronado Center Endowment Fund, 1984
Anne B. Little Fund for Education, 2003
Anne B. Little Fund for Health, 2003
APS Fine Arts Enhancement Endowment Fund, 1989
Bank of Albuquerque Charitable Endowment Fund, 2000
BeNicePlayFair.com Fund, 2004
Beresford and Margaret Menagh Fund for Animals, 2013
Beresford and Margaret Menagh Fund for the Environment, 2013
Blaine Ryan Kindler Memorial Education Fund, 1999
Carl David Bedford Fund for People in Need, 2003
Charles D. Ryan and Susan E. Ryan Memorial Fund for Education, 2003
Cindy and Ken Johns Family Fund, 1996
Classical Music Endowment Fund, 2013
Conscience of Society Endowment Fund, 1986
Crazy Granny's Cookie Jar, 2000
Cumulus Media Endowment to Expand Music Education in APS Schools, 2001
Dave and Mary Colton Fund for Arts and Culture, 2009
Dave and Mary Colton Fund for Children and Youth, 2009
David and Martha Cooper Endowment Fund, 1984
David Maccini Memorial Fund, 1996
Dazzo Family Fund for Children & Youth, 2000
Diane K. Yanney Education Field of Interest, 2022
Ebel Family Fund for Children and Youth, 1985
First Things First Endowment Fund, 2008
Florence and Bob Stamm Endowment Fund, 1986
Frank and Mickey Peloso Fund, 2006
Frank D. and Marie K. Gorham Endowment for Classical Music, 2013
George Clayton Pearl Family Endowment Fund, 1993
Goldenberg-Elder Family Fund, 2021
Green Tara Endowment for Women's Issues, 2018
Harvey Yates Education Endowment Fund, 1984
Hearst Music Education Fund, 2013
Holocaust Memorial Endowment Fund, 1988
Howard W. & Zona Ehret Henry Fund for the Performing Arts, 2010

Jackie A. Fallis Endowment Fund, 2007
James and Marguerite Hall Endowment Fund, 2021
Jean Stutsman Marshall C.M. Light Endowment, 2022
Jeanne M. Trauger Memorial Homecare Fund, 2009
John F. and Mae M. Lark Fund in Honor of Franklin and Bernice Jones, 1994
Judith Jeanne Babcock Endowment Fund, 2021
June D. Schutzberger Endowment Fund, 2014
Kirschner Family Fund, 2014
Kubié Family Fund for Classical Music, 2013
Kurt and Edith Kubié Family Human Services Endowment Fund, 2013
Lee and Jan Miller Fund, 2017
Lucy Ann Warner Endowment Fund, 2002
Lynn Rosner Memorial Fund, 1997
Margarita Martinez Fund for Theater Arts, 1988
Martin S. Morrison Endowment Fund, 2006
Mary Stephenson Utsinger Endowment Fund for Children, 2011
Mary Stephenson Utsinger Endowment Fund for Preservation, 1987
Mayor's Endowment Fund for Children, 1987
Mayor's Prize, 2015
Mr. and Mrs. H.L. Galles, Jr. Arts & Culture Fund, 1985
Mrs. Clinton P. Anderson Health Endowment Fund, 1994
Nancy Anderson Roberts Arts & Culture Endowment Fund, 1983
Nancy Thompson Harris Memorial Fund, 1997
Nellita E. Walker Endowment Fund, 1997
New England Endowment Fund, 1990
New Mexico Human Rights Education Coalition, 2014
Patricia McDonald Fund for Health, 2016
Paul Noble Vosburgh and Jane Berry Vosburgh Endowment Fund, 2007
Peggy Cavett-Walden & Professor Jerrold Walden Fund for Art & Music, 2014
Peggy Pick Bacon Memorial Fund for Education, 1995
Performing Arts Endowment Fund, 1988
Reba Price Fund for Animal Welfare, 2016

Reba Price Fund for Children and Families, 2016
Reba Price Fund for Performing Arts, 2016
Robert and Ann Clark Arts & Culture Endowment Fund, 1986
Robert and Ann Clark Preservation Endowment Fund, 1986
Robert and Celeste Loughridge Fund, 2001
Robert and Zane Taichert Endowment Fund, 1984
Robert Loughridge and Celeste Page Loughridge Endowment for Classical Music, 2023
Robert P. Marshall, Sr. Memorial Endowment Fund, 2007
Roy Lee Cain Endowment Fund, 2011
Sexual Assault and Domestic Violence Programs Fund, 1996
Stephen J.E. Sprague Memorial Endowment Fund, 2007
Stephen L. Moody Memorial Fund for Children with Special Needs, 1995
T.J. Sivley and Mary Ray Sivley Environmental and Historic Preservation Fund, 2000
Taylor and Joan Bowen Charitable Endowment for Preservation of Public Trees and Gardens, 2006
Taylor and Joan Bowen Charitable Endowment for Wildlife Protection and Control, 2006
The Ann C. Bailey Fund for Animals, 2017
The Ron and Jane Abramshe Fund for Animals, 2020
Wells Fargo Bank Endowment for Classical Music, 2013
Wilhelmina Neat Coe, Peace Foundation '57 Fund for Health and Human Services, 1999
Wilhelmina Neat Coe, Peace Foundation '57 Fund for Victim Assistance, 1999
William "Bill" Cooper Memorial Endowment Fund, 2006
Youth Endowment Fund, 1989

Donor Designated Funds for Organizations

Adelamar N. Alcantara Memorial Fund for the New Mexico Asian Family Center, 2021
Agnes Faggart Bussiere Memorial Fund for Menaul School, 2007
Albert W. Tarbell Fund for the Episcopal Cathedral of St. John, 2013
Albuquerque High School Alumni Association Donor Fund, 2013

Albuquerque New Car & Truck Dealers Fund for Crime Stoppers, 1985
Alfred A. Abbott Charitable Endowment for ARCA, Inc., 2006
Alfred A. Abbott Charitable Fund for the Good Shepherd Center for the Homeless, 2007
Ann C. Lucero and David J. Lucero Endowment for Catholic Charities, 2019
Ann Simms Clark Fund for Planned Parenthood, 2005
Anne B. Little Fund for the Botanic Garden at New Mexico BioPark, 2003
Betty and Luke Vortman Endowment for New Mexico Philharmonic, Inc., 2015
Boys & Girls Clubs of Central New Mexico Fund, 1995
Cancer Services of New Mexico Endowment Fund, 1998
Carl F. Scott Scholarship Fund for New Mexico Military Institute, 2005
Carnicom Fund for the New Mexico Wildlife Association, 2020
Centro Savila Hopkins Center, 2017
Children's Cancer Fund of New Mexico-Donor Fund, 2010
Constance Zandstra Fund for Good Shepherd Center, 1998
Constance Zandstra Fund for MANA de Albuquerque, 1998
Dale E. Kempter Legacy Endowment Fund for the Albuquerque Youth Symphony Donor Fund, 1996
Davis-Kozoll Prevention Research and Practice Fund, 2021
Davis-Kozoll Village of Cuba Fund, 2017
Dean and Alice Irvin Fund for the UNM Cancer Center, 1986
Dismas House at St. Martin's Endowment Fund, 2003
Dr. Jane Ann Blumenfeld Endowment Fund for the SW Branch of the International Dyslexia Association, 2004
Ethics In Business CNM, 2017
Explora Science Center & Children's Museum of Albuquerque Donor Fund, 2015
Ginger Grossetete Donor Endowment Fund for Silver Horizons, 1984
Gloria Griffin Mallory Donor Endowment Fund for Teacher Development, 2006
Heading Home Donor Endowment Fund, 2016
Heights Healthcare Foundation Fund for Osteopathic Education, 1984

Ida May Cowan Fund for the Homeless at Little Brothers of the Good Shepherd, 1992
James M. Parker Endowment for the Parker Center for Family Business, 2019
Jeanne M. and Fred Trauger Genealogical Society Fund, 1991
Jeanne M. and Fred Trauger New Mexico Geological Society, 1991
John A. Myers Award for Leadership in Urban Excellence Endowment Fund, 2016
Joseph Saavedra's Pennies for the Homeless Endowment Donor Fund, 2014
Julie Gutierrez Memorial Fund for Menaul School, 2020
Karen Ortiz Endowment Fund for the Therapeutic Horseback Riding Program at Challenge New Mexico, 2004
KNME New Mexico PBS Great Southwestern Arts & Education Endowment Fund, 2013
KNME-TV Endowment Fund, 1987
Kubie Fund for Jewish Welfare, 2005
Kurt and Edith Kubie Family Endowment for Planned Parenthood, 2007
María Griego-Raby Fund for San Felipe de Neri Church Capital Projects, 2003
Moise Memorial Library 50th Anniversary Fund, 2005
Moise Memorial Library Fund, 2005
Nellita E. Walker Fund for KNME-TV, 1999
New Mexico Academy of Science Donor Fund, 2016
New Mexico Coalition for Literacy Donor Fund, 1988
New Mexico Engineering Foundation Donor Fund, 2008
New Mexico Voices for Children Future Fund, 2002
Opera Southwest Donor Fund, 2016
PB&J Family Services/Angie's Legacy Donor Fund, 2007
Presbyterian Ear Institute Endowment Fund Donor Fund, 2011
Ralph Berkowitz Fund for Albuquerque Youth Symphony, 2011
Rex Ward Fund, 2012
Reyer Fund in Support of Tribal Community Development, 1986
Roadrunner Food Bank Fund, 1984
Robert and Barbara Clemmensen Fund for Animal Humane, 2009
Robert and Barbara Clemmensen Fund for Cancer Services of New Mexico, 2009
Robert and Barbara Clemmensen Fund for Crime Stoppers, 2009
Robert and Barbara Clemmensen Fund for Little Brothers of the Good Shepherd, 2009
Robert Loughridge and Celeste Page Loughridge Endowment for the NM BioPark, 2023
Senior Citizens Law Office Endowment Fund Donor Sub Fund, 2019
Sunset Mesa Teacher Endowment Fund Corp. Endowment Fund, 2006
Susie Kubié Youth Symphony Fund, 2017
The Jim and Maxine Templeton Endowment Fund for the National Federation of the Blind of New Mexico, 2022
Vagh/Zavery Endowment Fund, 2006
Walter E. and Shelley Cohen Fund for Animal Humane Association of New Mexico, 2013

Walter E. and Shelley Cohen Fund for Congregation B'Nai Israel Endowment Fund, 2013
Wilhelmina Neat Coe, Peace Foundation '57 Fund for Catholic Charities of New Mexico, 1996
Wilhelmina Neat Coe, Peace Foundation '57 Fund for Christina Kent Day Nursery, 1996
Wilhelmina Neat Coe, Peace Foundation '57 Fund for Friends in Time, 1997
Wilhelmina Neat Coe, Peace Foundation '57 Fund for Habitat for Humanity, 1997
Wilhelmina Neat Coe, Peace Foundation '57 Fund for Health Care for the Homeless, 1998
Wilhelmina Neat Coe, Peace Foundation '57 Fund for MANA de Albuquerque, 1997
Wilhelmina Neat Coe, Peace Foundation '57 Fund for New Mexico Conference of Churches, 1999

Impact Funds

Aetna Life & Casualty Endowment Fund, 1984
Albuquerque Community Foundation Impact Endowment Fund, 1984
Albuquerque New Car & Truck Dealers Endowment Fund, 1986
American Home Endowment Fund, 1986
Arthur H. Spiegel Family Fund, 1996
Frank and Judy Love Impact Fund, 2017
Frank D. and Marie K. Gorham Fund, 2001
Glenwood Impact Fund, 2017
Gordon Church Endowment Fund, 2007
Hueter Bass Family Endowment Fund, 2000
JoAnn and Steve Ruppert Endowment Fund, 1998
John and Marie Marshall Fund, 2004
Johnnie Mae Tate Memorial Fund, 2006
Jorgensen Family Endowment Fund, 2007

Kurt and Edith Kubié Family Impact Endowment Fund, 2007
Lewis O. and Leona R. Kohlhaas Endowment Fund, 2000
Minnie Gooch Hall Charitable Endowment Fund, 2007
Molly R. Huber Endowment Fund, 2007
Mr. and Mrs. H.L. Galles, Jr. Endowment Fund, 1986
Mrs. Clinton P. Anderson Endowment Fund, 1994
Nancy Anderson Roberts Endowment Fund, 1983
Nina Forrest Impact Fund, 2022
Robert C. and Mary D. Poole Family Fund, 1996
Robert W. Kaufmann Endowment Fund, 2001
Strosnider Family Endowment Fund, 2004
The Jim and Maxine Templeton Unrestricted Charitable Endowment Fund, 2022
Theodore R. Brown Endowment Fund, 1983
Wells Fargo Bank Endowment Fund, 1998





Small white label with text, possibly a price tag or product description, located on the table in the foreground.

Small white label with text, possibly a price tag or product description, located on the table in the foreground.

Philanthropy CENTRAL

Yes, nonprofits can start endowments—and we are pleased to help the following nonprofit organizations manage endowment funds that can grow over time, providing a source of lasting support.

The Foundation considers effective management of organization endowment funds essential to maintaining the strength of our community's nonprofit organizations. With this support, organizations can achieve their goals and meet various needs in our community. In Albuquerque, we're fortunate to be served by so many generous nonprofits and philanthropists who invest in our community.

The following organizations have entrusted their endowment(s) to us:

10th Anniversary Women in Philanthropy Council Endowment, 2021
A Child's Garden Fund, 1989
Adelamar N. Alcantara Memorial Fund for the New Mexico Asian Family Center - Agency Fund, 2021
Adelante Development Center Fund, 1996
Albert G Simms II and Barbara Young Simms Fund for Manzano Day School, 2019
Albuquerque Boy Choir Fund, 2010
Albuquerque Chapter of the Military Officers Association, 2012
Albuquerque Crime Stoppers, Inc. Endowment Fund, 2007
Albuquerque Genealogical Society Endowment Fund, 2005
Albuquerque High School Alumni Association Fund, 2004
Albuquerque Hispano Chamber of Commerce Endowment Fund, 2011
Albuquerque Little Theatre Endowment

Fund, 2008
Albuquerque Rose Society Endowment Fund, 2007
All Faiths Endowment Fund, 2022
Amy Biehl High School Endowment, 2013
Animal Humane New Mexico Endowment, 2008
Animal Protection of New Mexico Fund, 1996
Arc of New Mexico Fund, 1983
ARCA Fund, 2001
B'nai Israel Fund, 1990
Big Brothers Big Sisters of Central New Mexico Fund, 1987
Carrie Tingley Hospital Foundation Endowment Fund, 2012
Casa Angelica Endowment Fund, 1997
Casa Esperanza Endowment Fund, 2007
Catholic Charities Human Services Fund, 2020
Center for International Studies - Albuquerque International Association, 2017
Center for International Studies - Albuquerque International Association International Lectures, 2019
Chamber Music Albuquerque Fund, 2004
Children's Cancer Fund of New Mexico, 2008
Children's Grief Center Endowment Fund, 2009
Cibola County Education Foundation Fund, 2005
Congregation Albert Fund, 1994
Cottonwood Classical Preparatory School, 2008
Dale E. Kempter Legacy Endowment Fund for the Albuquerque Youth Symphony, 1996
Dual Language Education New Mexico Endowment, 2012
Easter Seals New Mexico Fund, 1987
Endowment Fund for the Friends of the Corrales Library, 2016
Evelyn Curtis Losack Endowment for Music Education, 2016
Explora Science Center & Children's Museum of Albuquerque Fund, 2002
Filipino American Foundation of New Mexico Fund, 2003
Friends of the Rio Grande Nature

Center Fund, 2000
Ginger Grossetete Endowment Fund for Silver Horizons, 1984
Gloria Griffin Mallory Endowment Fund for Teacher Development, 2006
Gorham Fund for Scouting, 2013
Great Southwest Council, Boy Scouts of America, 2011
Greater Albuquerque Housing Partnership Endowment, 2008
Guadalupe County Hospital Fund, 1998
Guys Give Ron Eppes Founder's Endowment, 2018
H. Patrick and Debra Jo Dee Alexis de Tocqueville Legacy Society Endowment FBO UWCNM, 2007
Hawks Aloft Quasi Endowment Fund, 2023
Heading Home Endowment Fund, 2012
Henry and Kathie Dodd Fund, 2018
Holmes Endowments, 2008
Howard & Debra Friedman Family Fund - UWCNM, 2022
Indian Pueblo Cultural Center Endowment Fund, 2022
Joanne W. Finkelstein Fund, 2015
John Merson UWCNM Community Fund Endowment in Honor of Jack & Frances Holmes, 2009
Joseph E. and Virginia Lee Wright Memorial Fund, 2014
Joseph Saavedra's Pennies for the Homeless Endowment, 2015
Junior League of Albuquerque Administrative Endowment Fund, 1999
Justine Opel Opera Southwest Endowment Fund, 2015
Karen and Ted Pound Fund, 2015
Kirk and Debra Benton UWCNM Community Fund Endowment in Honor of Jack & Frances Holmes, 2008
Larry and Sheriece Strickland Fund Endowment, 2010
Leadership New Mexico Endowment Fund, 2009
Liz Canfield Memorial Fund, 2021
M.J. Hicks Fund for Self-Sufficiency for Women, 2012
Mandy's Farm Endowment Fund, 2019
Manzano Day School Fund, 1985
Manzano Day School Kathy Rimsha Fund, 2007
Manzano Day School Maggie Simms WINGS Fund, 2004

Manzano Day School Peterson Learning Center Fund, 2004
Manzano Day School Stewart Family Wings Fund, 2007
Manzano Day School Wings 6 Fund, 2012
Manzano Day School Wings of Brotherhood Fund, 2009
Manzano Day School Wings of Friendship Fund, 2006
Max Danger for Children Fund, 2018
Meals on Wheels of Albuquerque Endowment Fund, 2009
Menaul School Endowment Fund, 2007
National Hispanic Cultural Center Foundation Fund, 2017
NDI New Mexico Fund, 2012
Neal Piltch WINGS Fund, 2012
New Mexico Academy of Science Endowment Fund, 2007
New Mexico Art League Fund, 1992
New Mexico BioPark Society Fund, 1987
New Mexico BioPark Society Fund for the Aquarium & Botanic Garden, 1988
New Mexico Cancer Center Foundation Endowment, 2017
New Mexico Coalition for Literacy Fund, 1988
New Mexico Engineering Foundation Endowment Fund, 2005
New Mexico Museum of Natural History Foundation Fund, 1986
New Mexico Parents of Multiples Endowment Fund, 2016
New Mexico School for the Blind and Visually Impaired Fund, 2016
New Mexico Voices for Children Endowment Fund, 2007
Outpost Productions Endowment Fund, 2006
Parents Reaching Out Endowment Fund, 2008
PB&J Family Services/Angie's Legacy, 2007
Placitas Artists Series, 2021
Power of the Purse Endowment Fund, 2015
Presbyterian Ear Institute Endowment Fund, 2011
Senior Citizens Law Office Endowment Fund, 2014
Special Olympics of New Mexico Fund, 2001
St. George Greek Orthodox Church Endowment Fund, 2015
St. Mark's in the Valley Day School Fund, 1986
St. Martin's Hospitality Center (HopeWorks) Endowment Fund, 2008

Strickler Women's Endowment, 2018
Talbot Women's Endowment Fund, 2014
The Bartok Love Fund - A Pomeranian's Gift to People, 2016
The Herman & Marina Mauney United Way Fund, 2007
The Sonya Priestly - Art Gardenswartz United Way Impact Fund, for the Creation and Support of Strong Resilient Communities in New Mexico, 2020
The Suzanne M. Johnston Endowment for the New Mexico Ballet Company, 2016
Thomas J. Horan and Mary Ann Campbell-Horan Endowment FBO of UWCNM, 2007
Tocqueville Legacy Society Endowments, 2008
UWCNM Community Fund Endowment in Honor of Jack & Frances Holmes, 1993
UWCNM Endowment FBO the Community Fund established by Mr. J. Alan Hunton, 2007
UWCNM Endowments, 2008
UWCNM Jennie and Shirley Wells Endowment Fund, 2013
UWCNM Named Endowments, 2008
Virginia Nelson Mayo Memorial Fund, 2013
VSA arts of New Mexico Fund, 1998
Walter E. and Shelley Cohen Fund for United Way of Central New Mexico, 2013
WESST Endowment Fund, 2013
YLS High School Youth Leadership Endowment Fund, 2016
YMCA Fund, 1998

Other Programs

A. David Sandoval Endowment Fund for Music Education, 2002
Adelamar N. Alcantara Memorial Fund for the Support of Filipino Community Activities in New Mexico, 2021
All Together NM, 2020
Anne B. Little Fund for Aid to Senior Citizens, 2003
Beresford and Margaret Menagh Fund for Educational Opportunities for Navajo Children, 2013
Betty and Luke Vortman Endowment Fund, 2003
Betty and Luke Vortman Restricted Endowment Fund, 2013

Bob and Gwen Cameron Charitable Endowment Fund, 2006

Bryan Konefsky Fund, 2018
Charles A. Burciaga Endowment Fund, 2019
Daniel and Marian Frances Smith Hooks Memorial Fund, 2001
de Profundis Organization Endowment Fund, 2007
Edward L. Hillsman Fund, 2022
Ferguson Mraz Artist Fund, 2019
Friends of Music Fund, 1998
Heartbroken: ACF Fund for Social Justice, 2020
Henry C. Dennis and Sara B. Dennis 624 Champion Building Endowment Fund, 2014
Jack and Donna Rust Family Fund, 1996
Jane P. Sandoval Endowment Fund for Fossil Preparation, 2002
Janet Youngberg Endowment for Roadrunner Food Bank, 2013
John P. and Terri Salazar Endowment Fund, 2002
Julie Weaks-Gutierrez Opportunity Endowment Fund, 2020
Ladies Who Launch, 2019
Linda K. Estes Giraffe Award Endowment Fund, 2005
Nathan Wineberg Endowment for Senior Centers, 2006
Ngala Memorial Endowment Fund to Assist Musicians with Medical Care, 2014
Pamela B. Gordon Endowment Fund, 2011
Paul A. and Patti A. Marianetti Fund, 2005
Sally Denzer Endowed Fund for Watermelon Mountain Ranch, 2014
Susan G. Hill Fund, 2020
Tapestry Grant Program General Fund, 2018
Templeton Estate Fund, 2021
The ACF/UWCNM Emergency Action Fund, 2020
The Community Collaboration Fund, 2019
The Compassion Fund, 2019
The Phillip Hamilton Raby, Sr. Fund for Literacy, 2005
UNM Fredrick Hammersley Visiting Artists Program, 2019

ray zimmer heritage society

The Ray Zimmer Heritage Society, named in honor of one of the Foundation's founders and its first Board President, is designed to strengthen and sustain Albuquerque for generations to come. The Heritage Society connects the past, present and future by allowing donors to benefit future generations through deferred gifts and estate plans.

These generous individuals have committed to the future of our community by naming the Albuquerque Community Foundation in their wills, qualified retirement plans, life insurance policies, trusts, or other instruments.

Please join us in acknowledging Heritage Society members for their far-sighted generosity and commitment to Albuquerque's future:

Mr. & Mrs. Abramshe
John & Kim Ackerman
JoAnn Albrecht
Barbara & Rex* Allender
Richard & Michelle Andes
Anonymous (7)
Richard Babcock
C. David Bedford
Beverly & Perry Bendicksen
Fran Berglund
Nancy Berg
Bernie & Sue Bernard
Wes & Jessica Bigney III
Claudia Bloom
Tom & Francesca Blueher
James & Diane Bonnell
*Taylor & Joan Bowen
Sue Brown
Jim Cook & Robbie Buell

Charles Burciaga
Mr. Kenneth L. Conwell II
*Joe & Mary Cotruzzola
Mr. Warren B. Cox & Dr. Sue Forster-Cox
Billie Jo Crouse
Gale Williams Doyel
William E. Ebel
Lauri Ebel
Linda & Richard J. Eitzen
Mr. & Mrs. David Emin
Ian & Katie Esquibel
Ms. Nada Fahnstock
Nina Forrest
Mr. & Mrs. Wechter Friedman
Nancy Furbush
Trudy Gage
Larry Gilbert
Mr. & Mrs. Donald Goldfarb
Terri Giron-Gordon & Gary Gordon
Jeanne Grealish
Ginger Grossetete
Kreg Hill
*Daniel & *Marian Frances Smith
Hooks
Paul & *Ladonna Hopkins
David Jolly
Bryan Konefsky
Stephen Kranz
Judy Bearden Love
Kathleen "Nats" Lunde
Dr. Gloria & *Robert Mallory
Ed & Jane McCullough
*Ellie & Gary Miller
Steven & *Beth Moise
Drs. Frank & Dianna Montoya
Claudia & Robert Moraga
SJ Morgan
Ron & Mary Moya
Ron Beauchamp & Cecilia Navarrete
David Oberg
Laree Perez
Judy & Steve Reuter
Kenneth & Eileen Ross
María Griego-Raby & Randy Royster
Mr. & Mrs. Steve Ruppert
Arthur Schreiber
Georganne Seeley
William Snead
Carolyn Spolidoro

Jeff Sterba
Walter & Mimi Stern
Sally Storrs
Mrs. Marilyn B. Strauss
David Stuart PhD & Cynthia Stuart EdD
Mark Duhamel & Ann Swancer
Bob Tinnin
Karin Urban
Mr. & Mrs. Paul Vosburgh
David & Loral Welde
David Zeuch & Nena Joy Almodovar

*Remembered





Partners in PHILANTHROPY

As a nonprofit organization, Albuquerque Community Foundation also relies on the generosity of donors for critical operational support. Partners in Philanthropy invest in us so we may continue to invest in others. These donors exemplify and embody the belief in community support.

Thank you to those who help us accomplish our goal to support Albuquerque through philanthropy.

Endowed Administrative Funds

The following donors have elected to support the Foundation's operations in perpetuity through the establishment of an endowed administrative fund.

Albuquerque Community Foundation Administrative Endowment Fund, 2005
 Bank of America Endowment Fund, 1994
 Bradbury Stamm Administrative Endowment Fund, 2002
 Doug and Sarah Brown Administrative Endowment Fund, 2004
 Frank Gorham, Jr. Endowment Fund, 1989
 Glenn Fellows and Patricia Hancock Administrative Fund, 2017
 Jeff and Janet Sterba Partners in Philanthropy Endowment Fund, 2006
 Laura and Zack Clem, Jr. Endowment Fund, 2007
 Laura Hueter Bass Fund for Administrative Excellence, 2006
 Moise Family Administrative Endowment Fund, 1997
 Mrs. Clinton P. Anderson Administrative

Endowment Fund, 1997
 Nancy Anderson Roberts Administrative Endowment Fund, 1989
 Peltier, Gustafson & Miller PA Endowment Fund, 1996
 Ray and Barbara Zimmer Endowment Fund, 1989
 Robert and Ann Clark Administrative Endowment Fund, 1991
 Susanne B. Brown Administrative Endowment Fund, 1989
 Theodore R. Brown Administrative Endowment Fund, 1983
 Walter E. and Shelley Cohen Fund for ACF, 2013
 Wells Fargo Bank Administrative Endowment Fund, 1994

Friends (up to \$499)

Anonymous
 David Bernstein & Erika Rimson
 Mary Ellen Capek & Sue Hallgarth
 Crypto Adoption Fund - Renaissance Charitable
 Mark Epstein
 Gary & Melodie Eyster
 Melissa Freeman
 Ken Harmon & Cathy Haight
 The Kadavil Family
 David Kauffman
 Sarah Kotchian & Robert Nellums
 Marisa Magallanez
 John & Silke Niederhaus
 Noon & Associates LLC
 Robert & Diane Orchard
 Janice Parker

Jonathan Roepcke
 Manuel Sanchez
 Jane Scott
 Judith Weinreb
 Debbie Weissman
 Michelle & Nick Williams

Partners (\$500 & up)

Abinash Achrekar MD MPH & Shalini Achrekar
 Emily & Garret Allen
 Barbara Allender
 Robert Anderson & Susan Nelson Anderson
 Anonymous
 Thomas "Tom" E. & Keri A. Antram
 Arellana Barela Levenson & Greg Levenson
 Susan Beard Fund
 Dave Bedford
 Beverly R. & Perry E. Bendicksen
 Mr. Cliff & Mrs. Nancy Blaugrund
 Bob Bovinette
 Bob Bowman & Jack Knight
 Louise Campbell-Tolber & Steven Tolber
 Elaine & William G. Chapman
 Brian & Aleli Colón
 Loretta Cordova de Ortega & Roberto Ortega
 Billie Jo Crouse
 Philip & Krys Custer
 C. Thomas & Jan Daulton
 Michelle & Jimmy Dearholt
 David & Debbie Dozier
 Randy & Redd Eakin



Sanjay Engineer
Monique Fragua
Jason Galloway
María Griego-Raby & Randy Royster
Roger & Donna Hagengruber
Lowell Hare
Debbie & Irwin Harms
Rebecca & Jason Harrington
Connie & Doug Henry
Mary Herring
Amy & Greg Homicz
Pam Hurd-Knief & Dr. Ron Knief
James & Sue Hutchison
Mark Interrante & Mary Walker
Jane Jones
Michael & Marianne Kelly
Hank & Bonnie Kelly
Patrick & Debbie Kinsella
Richard & Carolyn Lindberg
Lineberry Foundation
Judy Bearden Love
Millie McMahon
Miller Stratvert PA
Ranne Miller & Margo McCormick
Marcus J. Mims
Paul & Sandie Mondragón
Shirley Morrison
Ron & Mary Moya
Michael & Judy Muldawer
Albert & Shanna Narath
NDB and CEB Fund
Joaquin Noon
Linda H. Parker
Leslie Phinney
Jetta Reynolds
Stephen Royce
Anne & Ken Sapon
Stan & Marilyn Stark

Charlotte Coulombe Schoenmann &
Stuart Schoenmann
Thomas Schwab & Pamela Donegan
Walter E. & Mimi Stern
The LEF Foundation
Amy & Tom Spross Foundation
Becky Teague
Len & Liz Trainor
Sara R. Traub
Tony Trujillo & Ann Saiz-Trujillo
Esther Villas-Wingfield & Sean
Wingfield
José Viramontes
Lori Waldon
Joan Weissman & Michael Nutkiewicz
Alan & Joyce Weitzel
Chuck & J.D. Wellborn
David & Susan Weymouth
Cheryl & Joe Zebrowski
Kathryn Zimmer





FUTURE FUND
of the albuquerque
community foundation

future FUND

Future Fund is a giving circle for young professionals focused on redefining philanthropy and fostering community engagement. Since 1997, the group has awarded nearly \$400,000 in unrestricted grants and grown their endowment to over \$725,000.

Members kicked off 2023 with the group's Annual Grant Breakfast hosted at Flying Roadrunner Bakery. 2022 Grant Night recipient Family Promise of Albuquerque provided an update on their work and Future Fund members voted to award a \$1,500 microgrant to New Mexico Coalition to End Homelessness.

Future Fund teamed up with Young Professionals of Albuquerque again over the summer to host a Community PowerUp event at Tractor Brewing Company Wells Park. Members from both groups voted to award a \$2,500 microgrant to the Women's Housing Coalition.



Grant Night, the group's largest event of the year, was held at Hollow Spirits Distillery. Attendees discussed four issues surrounding the Social Determinants of Health in a roundtable format to determine Future Fund's granting focus area for the upcoming year. Members voted to focus on health and awarded a \$23,300 grant to Casa Esperanza.

In the fall, Future Fund held their last social and microgrant event of the year at Sunday Service Motor Co. A \$1,500 microgrant was awarded to All Faiths Children's Advocacy Center. At the event, Pete Garcia was also honored as the 2023 Outstanding Philanthropist Award winner. Pete serves as an AmeriCorps VISTA Volunteer Liaison for the City of Albuquerque and is a key figure in Native Health Initiative's Running Medicine.

If you're interested in joining Future Fund or learning more, please visit go.abqcf.org/future-fund.



2023
Outstanding
Philanthropist
Awardee Pete
Garcia.



Board:

Amanda Marquez, *Board Chair*
Rhiannon Samuel, *Chair-Elect*
Amanda Aragon, *Immediate Past Chair*
Kelcy Flanagan, *Secretary*
Emma Lewis, *Community Impact Committee Chair*
Madison Jones, *Governance Committee Chair*
Thomas Cooper, *Membership Committee Chair*
John Michael Ordorica, *Partnership Committee Chair*

Adam Alvarez
Anthony Ortiz
Chase Barnes
Daniel Trujillo
David Diller
Nina Chavez
Julisa Rodriguez
Sebastian Martinez
Erin Scott Adams
Desiree Stewart

Members:

Adam Alvarez & Kristin Grassham
Madonna Analla
Amanda Aragon
Victoria Ann Archuleta
Chase Barnes
Monica & Jordan Barry
Kyle Biederwolf & Sarah King
Michael & Kelsey Bishop
Gabe Castro
Nina Chavez
Joshua Clemena
Thomas Cooper
Katie Crouch
Florence Cunningham
Melissa Delgado
Kirsten & Jamie Dick
David Diller
Katie & Ian Esquibel
Teala & Michael Farrington
Cole & Kelcy Flanagan
Alex & Karen Flores
Daniel Friedman
Pete Garcia & Alicia Lopez
Richard Garcia
Cassandra & Leroy Garley
Lisa & Ryan Goodman
Rachel & Billy Gupton
Clark Haskins
Andrea Hetrick
Felix Higuera
Amy Hovee
Madison Jones & Aarya Engineer
Keith Jordan
Chauna & Tyler King
Aaron Kraft & Monear Makvandi
Danielle Lajoie & Zachary Drees
Mariah Lawhon
Emma Lewis
Amanda Lopez & Jake Vautier
Angelica Maestas (Bruhnke)
Amanda Marquez

Monica Martinez
Sebastian Martinez
Ana Melendez
Brenna Moore & Erin Lecocq
Sabrina Moore
Kinsey Moores
Sara Norton-Sanner
Katie Ogawa Douglas & George Douglas
Mitchel Olson
John Michael & Mackenzie Ordorica
Anthony Ortiz
Jose Ortiz
Isaac & Ronnie Rivas-Savell
Jade Rivera
Jon Roberts
Julisa Rodriguez & Gabe Gallegos
Madison Rumbaugh
Rhiannon & Adan Samuel
Roman Sandoval
Stephanie Santillanes & Marcus Garcia
Nicholas Schafer
Cynthia Schultz
Erin Scott Adams
Desiree Stewart
Sonya Torrez
Daniel Trujillo
Ashley Wagner
Remi Ward
Kristyn Weeks
David Williams & Molly Maenchen
John Williamson
Tory Witt





ALBUQUERQUE
COMMUNITY FOUNDATION

Social Giving Club

social giving CLUB

Social Giving Club brings together experienced philanthropists who are looking for engaging social opportunities to make a larger impact in the community. Established in 2015, each year this giving circle group awards a \$25,000 grant to a local nonprofit and hosts several gatherings for members and friends to connect.

The Club kicked off 2023 with an opening social hosted by advisory committee member and Foundation Trustee Charlotte Schoenmann. In May, members showcased their vocal prowess at the group's first-ever karaoke night hosted by member Judy Love. We said farewell to summer at the Summer Send Off event hosted by advisory committee member and Foundation Trustee Sanjay Engineer at FBT Architects. Attendees received an update from 2022 Grant Night recipient STEM is Child's Play to learn how their grant has helped the organization connect young people to STEM education opportunities.



Club members Laurie and Rogan Thompson served as hosts for the annual Grant Night in November, where members voted to award their \$25,000 grant to Fathers Building Futures. This organization works with parents experiencing barriers from incarceration to help them receive the best opportunities for stability.



To join or learn more about the Social Giving Club, please visit go.abqcf.org/sgc.



Advisory Committee:

David Dozier
Debbie Dozier
Sanjay Engineer
Charlotte Schoenmann

Members:

Cris & Kenneth Abbott	Pam Hurd-Knief & Ron Knief
Nena Joy Almodovar & David Zeuch	Carol Jakowatz
Judy Bearden Love	Lynn Johnson & Fritz Eberle
Mark & Emily Benak	Jane Jones
Sarah Biondi	Judy Love
Amy & Eric Boger	Tom & Carol Maddux
Jeff Brown & Sandy Hoogeboom-Brown	Mark Napolin
Larry Chenoweth	Leslie Neal
Kimber Chrissos	Jerald & Cindi Parker
Michelle & Jimmy Dearholt	Ronald Pattison & LaVanda Jones
Michael Dexter & Yvonne Garcia	Pat & Art Priebe
Debbie & David Dozier	Kathleen & Will Raskob
Claire Ellen Dudley	Susan Riali
Abigail Eaton & Kevin Wiggins	Peggy Roberts
Sanjay Engineer	Anna & Gabriel Sanchez
Glenn Fellows & Patricia Hancock	Charlotte & Stuart Schoenmann
María Griego Raby & Randy Royster	Julie Silverman
Nina Forrest	Suzanne Strong & Marc Gillihan
Howard Friedman & Debra Wechter Friedman	Allyn Summa
Billy & Rachel Gupton	Laurie & Rogan Thompson
Debbie & Irwin Harms	Michael & Jackie Wald
	Linda Weil
	Todd & Felicia White
	Franklin Wilson, Foundation for Sustainable Living





pride CIRCLE



In June of 2023, the Foundation launched PRIDE Circle, the first and only permanent endowment to fund organizations that focus their services specifically and intentionally on the lesbian, gay, bisexual, transgender, queer/questioning, intersex, asexual+ (LGBTQIA+) community in the greater Albuquerque four-county area.

The Foundation defines PRIDE as P: Philanthropy, R: Resource Sharing, I: Inclusivity, D: Deliberate Grantmaking, E: Endowment in Perpetuity.

The PRIDE Circle was created to address the historic underfunding of LGBTQIA+ organizations. In the four-county Albuquerque area, there was no permanent endowment specifically to fund these organizations, and the LGBTQIA+ community was generally not engaged in philanthropy. In fact, 2019 was the first time that LGBTQIA+ focused organizations were funded in the Foundation's annual grant cycle, and 2022 was the first year that LGBTQIA+ focused organizations were highlighted at a general event.

PRIDE Circle co-founders identified at least 14 existing nonprofits with a web presence dedicated specifically to serving LGBTQIA+ people in Albuquerque. The kick-off event at New Neuvo in Old Town in June saw over 70 people in attendance, many of whom joined. Attendees heard from Advisory Committee Member Melody Wells, Bernalillo County Probate Judge Cristy Carbón-Gaul and founding PRIDE Circle members.

The first grant awarded by the group at their inaugural grant night in November was to Casa Q for \$10,000 to support their work in providing safe living through housing, services and advocacy. They are family and friends, supporting and strengthening the community through love and acceptance.

The Foundation encourages anyone with a desire to create a safe future for the LGBTQIA+ community, including those who may have never considered themselves "philanthropists," to email donors@abqcf.org with PRIDE Circle in the subject line. Online donations can be made at go.abqcf.org/pride.



Advisory Committee:

Pamm Meyers
Juaquin Moya
Melody Wells

Founding Members:

Zac Addison
Jason Anderson
Sue Anderson
Anonymous
Julian Baca
Rebecca Bak
Bank of America Corporation
Arellana Barela Levenson & Greg Levenson
Chase Barnes
Hakim Bellamy
Beverly & Perry Bendicksen
Hyunju Blemel
Bob Bowman & Jack Knight
Bill Brooks
Dan Busbey
Cristy Carbón-Gaul & Daniel Gaul
Jeffrey Carr
Brian & Aleli Colón
Joseph Cordoro
Shelbie Corriz
Jack Cox & Edwin Light
Florence Cunningham
Linley & Michael Daly
Tom & Jan Daulton
Dennis Deshaies
George Dresden & Bonnie Barnes
Clarissa & Dale Earl
Katie & Ian Esquibel
Scott Farris
Alex & Karen Flores
Dominic Garcia
Paula Getz & Wendy Foxworth
Mike Gonzales
Myrella Gonzalez
Keith Greer
Dovid Grenache
Danielle Greigo & Zac Bittner
Khia Griffis
Debbie & Irwin Harms
Andrea Hays
Chris Heise
Annmarie Henton
Esmeralda Herrera
High Desert Playback in memory of Simbwala Schultz
Dorothy Holland
Pam Hurd-Knief & Ron Knief
Dean Jacoby
Karma Jessen
Nancy Katz

Sara Keller
Kathy Kunda & Kathy Barber
Michael Peter Lakoff
Elizabeth Leung
Kate Leung
Susan & Jimmy Leung
Justine Luparello
James Mackenzie & Mary Wommack
Matt Makofske & Michael Hamilton
Jerry Matthews & Gregory Segura
Eric Mazzie
Kelsey McCaffrey & Cori Benedict
Kristin McLoughlin
Kineo Memmer
Kathleen & Andrew Metzger
Pamm Meyers & Beth Schatz
Bianca Mijares
Paul & Sandie Mondragon
Byron Morton II
Joaquin Moya & Kam Culbreth
Spencer Naar
Dalilah Naranjo
Denise Nava Wyrick & Drew Wyrick
Ashton Nichols
Grey Nishio
Nusenda Credit Union
Paul Oostenbrug & Jeremiah Kelly
Anthony Ortiz & Brandon Taylor
Yátma Palomo
Andrea Pepin
PNM Resources Foundation
León Powell
Tim Price
Qadir
Chris Ramirez
Miriam Rand & Ona Lara Porter in memory of Helen Rand Sproull
Victor Reyes
Jack Reynolds
Mari Rochelle
María Griego-Raby & Randy Royster
Renee Ruybal
Raymon Salas
Stephanie Santillanes
Anne & Ken Sapon

Charlotte & Stuart Schoenmann
DeAnn Sena O'Connor
Hari Sheppeard
Monet Silva
Rae Lee Siporin
Letisha Spencer & Adam Golfman
Emily Stafford
Andrew & Katie Stone
Mark Sullivan
Sunny505
Courtney Thompson
Sophie Trusty
Karla Vecchia
Dezaree Vega Garcia
Christine Vigil Baxman & Shawn Baxman
Matt Vinson
Lori Waldon
Remi Ward
Abby Webb
Linda Weil
Melody Wells & Hannah Bluhm
Byrch & Katie Williams
Jim Williams
Michelle & Nick Williams
Amanda and Nicole Woodards
Celia Yapita & Tim Ashby



the FUNd

When The FUNd opened in 1988 with a \$2 million donation, it was the largest of the Foundation's donor advised funds. Today, it is our longest-standing active fund and awards between \$200,000 and \$300,000 each year. Though the donor wishes to remain anonymous, they are highly engaged in the grant-making process that contributes to the thriving visual arts community in the Albuquerque area.

Focused on contributing to visual artists and organizations, installations and exhibitions, especially those with youth engagement or a grassroots cultivation component, The FUNd provides economic opportunity through artist-in-residence as well as youth and arts justice programs and allows artists to grow and make a living from their art.

Past recipients have included Working Classroom, whose mission is to cultivate the artistic, civic and academic minds of

youth through in-depth arts projects with contemporary artists. Another is Basement Films, a volunteer-run micro-cinema supporting experimental and under-represented forms of media-making through public screenings, performances, workshops and lectures.

"Public art has also been a recipient of awards from The FUNd," says Khia Griffis, Foundation Community Impact Director. "For example, 'Pueblo Matriarch,' the bronze sculpture installed in May in the traffic roundabout at 12th Street and Menaul by Santa Clara and White Mountain Apache artist Greyshoes, was supported by The FUNd.

The piece commemorated the Foundation's 40th anniversary and was a way to reflect and celebrate the area's historic agricultural usage, the heritage of the former Albuquerque Indian School and the presence of the Indian Pueblo Cultural Center nearby."





“ The FUNd is our longest-standing active fund and awards between \$200,000 and \$300,000 each year.”

globe runner SCHOLARSHIP FUND

Kathie Dodd, Barbara Cohen and Beth Duncombe drive the Globe Runner Scholarship Fund. They, and generous community members, are the reason that more than a dozen high school students have been able to experience the life-changing effects of international cultural exchange and family stays over the past three years. Globe Runner, set up in 2021, provides scholarships for half of the exchange program costs, domestic travel and one-on-one mentoring.

The AFS-USA Faces of America program for high-achieving, under-represented high school students funds the other half of the program costs. Duncombe had experience with AFS Faces of America in Las Vegas, Nevada, during the 10 years she and her husband sponsored foreign exchange scholarships there.

“The Foundation provides the framework to accept donations, manages the paperwork and works to find other donors interested in the cause so we can expand to more students,”

Dodd says. “So far, we’ve sent 13 students to places like Spain, Colombia, Kenya, Egypt, Germany and Ghana.”

Helping families and students—many of whom have never been on an airplane or traveled outside their local areas—prepare for an international exchange is complicated and time consuming. “But inspiring and worth it,” Cohen says.

“The kids are amazing! They change their perception about their future opportunities after living with a family abroad. And the parents grow, too. We had one Native American mom who had many concerns about sending her son on an exchange. But after he returned, she now tells everyone about the program and how valuable it was for her son.”





“ More than a dozen high school students have been able to experience the life-changing effects of international cultural exchange and family stays.”

indian pueblo CULTURAL CENTER

The Indian Pueblo Cultural Center (IPCC) Organization Fund is part of the Foundation's Philanthropy Central Program. This initiative allows nonprofits to set up organizational endowments, held within the Foundation to take advantage of its benefits, including a diverse investment portfolio and low investment fees that typically only come with very large sums of money.

The program is helping keep IPCC's focus on its core mission as well as growth strategies versus devoting resources to managing the fund.

"Right now, we're focusing on how we communicate the existence and importance of the fund," says Mike Canfield, President and CEO, "and are working to develop individualized opportunities to give into the fund for long-term growth and to sustain the work we do. It's inspiring to be able to impact all of New Mexico's 19 Pueblo Communities, and act as a gateway for guests visiting New

Mexico and Albuquerque." IPCC is a gathering place where the culture of New Mexico's 19 Pueblos is celebrated and shared through creative and cultural experiences and provides economic opportunities to Pueblo and local communities through museum and gallery space; a library, archives, an education department; a teaching kitchen and restaurant; and a collection of murals and other Native arts and artifacts.

"We see our relationship with the Foundation as a partnership with an organization that is similar in nature and that also operates with the ideas of values-aligned philanthropy, like we do. We're both bringing people together in ways that make our community better," says Monique Fragua, IPCC's Chief Operating Officer.





“ IPCC is a gathering place where the culture of New Mexico’s 19 Pueblos is celebrated and shared through creative and cultural experiences.”

goldenberg-elder FAMILY FUND

May Goldenberg and Edward Elder set up the Goldenberg-Elder Family Fund to contribute to the Foundation's Health, Human Services and Education fields-of-interest. As mostly retired physician assistants, the couple had been aware of the Foundation's programs through family friends and grant award organizations. When their financial advisor suggested setting up a fund to ensure ongoing support for the community, they didn't need much convincing.

One aspect of the Foundation's fund and award programs that particularly appealed to the couple was that their support would be more effective than if they simply wrote checks themselves. They appreciated the Foundation's ability to understand the needs of the community, which includes community input, grows other

donors' interest and leverages other resources in addition to theirs so the community can thrive. They also knew of the Foundation's successful track record for supporting a variety of programs in the community.

"The Albuquerque community and intertwined smaller communities within the area are inspirational for their artistic and cultural richness, diversity, and caring outreach and interconnectedness," Goldenberg says. "I am also inspired by the number of nonprofit, for-profit and governmental organizations that work together to nurture communities' talents, gifts, amazing outdoor resources as well as supporting community needs and struggles. Edward and I view the Foundation as a great avenue to support both the needs and richness of Albuquerque and New Mexico."





“ The Albuquerque community and intertwined smaller communities within the area are inspirational for their artistic and cultural richness, diversity, and caring outreach and interconnectedness.”



Advancing Our Mission Through

Throughout 2023, the Foundation reinforced its commitment to our new mission to create equitable opportunities for all and align with Trust-Based Philanthropy principles through a series of impactful events.

Annual **NEW MEXICO** **ESTATE PLANNING** → **CONFERENCE**

In March, we hosted the **5th Annual New Mexico Estate Planning Conference**, bringing together attorneys, bankers, investment advisors, estate planning, tax practitioners and financial planners for a day of learning and networking. Through seven educational sessions, experts shared insights on trends and best practices in estate planning. Attendees also earned valuable continuing education credits, underscoring the conference's practical and professional impact.



The Community Impact Department made a key change to our Annual Grant Cycle by eliminating the burdensome grant presentation requirement. In its place, they introduced

PEEP (Party to Enhance Equity in Philanthropy), a series of networking events designed to foster authentic connections between nonprofits, Trustees and community members. Three PEEP events held in 2023 at Encuentro, Mandy's Farm and Vizionz-Sankofa celebrated the vital work of local nonprofits in a welcoming, informal



COMMUNITY ENGAGEMENT

setting. These gatherings helped nonprofits share their stories in a more relaxed and organic way, ensuring they could focus on building relationships and advancing their missions.



annual APPRECIATION CELEBRATION

The Foundation capped the summer with our **Annual Appreciation Celebration** at Albuquerque Museum, a joyful evening of gratitude for our supporters. Community members, Trustees, donors, giving circle members and staff gathered to celebrate the shared values that drive our work. Guests enjoyed a performance by Son Como Son and food from Slate Street Café, reminding us all of the vibrant, dedicated community we are privileged to serve. Each event in 2023 embodied our mission to support equitable opportunities, ensuring that every individual and organization has the tools to thrive.

great grant GIVEAWAY

The 10th anniversary of the Great Grant Giveaway was a celebration of synergy—embodying the spirit of collaboration and collective impact. Synergy is about more than just working together; it's about creating space for different perspectives, experiences and ideas to come together, producing results far greater than the sum of individual efforts. This concept was at the heart of this year's event, which raised a record-breaking \$625,000 in unrestricted funding for seven local nonprofits—nearly tripling the \$218,525 raised last year. Corporate sponsors, local organizations and individual donors all contributed to this record amount.

The Foundation celebrated the grant recipients during a luncheon at Hotel Albuquerque in Old Town. Attendees from each organization gathered for an inspiring afternoon

as nonprofits were recognized for their tireless work in making Albuquerque and New Mexico the best it can be. Special guests, Mayor Tim Keller and First Lady Elizabeth "Liz" Kistin Keller, joined us in honoring the seven organizations that received grants.

This year, we increased the number of grant recipients from four to seven, marking a commitment to the immediate and emerging needs of Albuquerque's nonprofits. The seven nonprofits featured to the right received funding.

The 2023 Great Grant Giveaway recipients embody the diverse and impactful work happening throughout Albuquerque and exemplify the synergy of community collaboration.





The **Albuquerque Adult Learning Center (ABQ-ALC)** is a community-based and grass-roots organization that fosters educational opportunities for adults in underserved communities. By providing adult education and career services, they empower individuals to achieve independence and long-term success. Their individualized, student-focused approach to learning is key to building brighter futures for Albuquerque's adult learners.



Hawks Aloft, Inc. protects wild birds and their habitats, combining research and education to build a network of all-age conservationists and fostering future leaders by providing educational programs to take up the cause of wildlife preservation. Their raptor rescue program responds to community calls for help with injured birds throughout New Mexico and the Southwest.



Keshet Dance Company is a creative force. Rooted in dance, mentorship and a welcoming space for the arts, Keshet activates community and fosters unlimited possibilities through education, engagement, innovation and the pursuit of justice. Their vision is to celebrate the art of dance and be a welcoming home for the fusion of the arts, artists and audience. Keshet represents the intersection of creativity and community empowerment, pushing the boundaries of what's possible through art.



New Mexico Tribal Resilience Action Network is a grassroots coalition dedicated to helping Indigenous communities mitigate and improve resilience to the effects of climate change. By combining traditional knowledge with modern strategies, they create solutions that honor and protect sacred lands, waters and cultural resources. This collective effort, grounded in local expertise, ensures a future where tribal communities thrive despite environmental challenges.

record-breaking in unrestricted funding raised

\$625,000

Not Our Farm (NOF) is a farm worker storytelling project that challenges the traditional narrative of farming by uplifting the voices of BIPOC, queer, and transgender farm workers. Through storytelling and activism, NOF works to reimagine an equitable and just future for agriculture that centers workers and dismantles systems of exploitation rooted in the colonizing history of farming in America.



Together for Brothers (T4B) is led by and for boys and young men of color (BYMOC), empowering them to build power, demand justice and create change. T4B hosts seasonal cohorts focused on education, employment, outdoor access and equity, food justice and healthy living. Notable achievements include New Mexico's first youth-led health impact assessment, five years of transit equity organizing and making Albuquerque the largest U.S. city with free public transit.



Be Brotherly.

Transgender Resource Center of New Mexico (TGRCNM) provides essential services, education and advocacy for transgender, nonbinary and gender-nonconforming (TGNC) communities. By offering access to healthcare, housing and resources, TGRCNM ensures that TGNC people can live healthy, thriving lives. TGRCNM values and works toward freedom and liberation for all TGNC people from the youngest to the eldest.



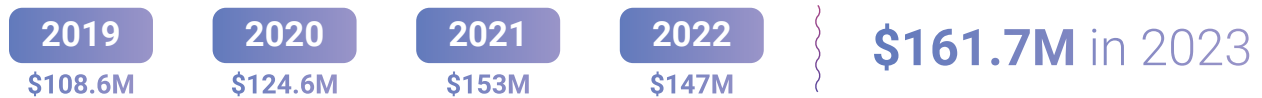
FINANCIAL summary

The financial information below reflects highlights from audited financial statements in the 2023 calendar year. Our most recent audited financial statements with accompanying notes (plus a report from an independent auditor) are available at abqcf.org.

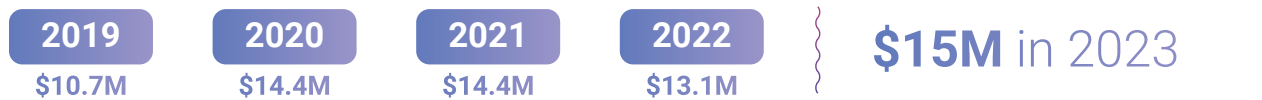
The Finance Committee oversees our accounting process. The Finance Committee is responsible for overseeing the audit process. The Investment Committee oversees all aspects of the investment program, ensuring assets are well-diversified and designed to meet the Foundation's objectives. Our investment management summary, along with quarterly investment performance reports, are also available on our website.

The objective of the Foundation's investment program is to produce growth and income sufficient to support both donor goals and Foundation objectives and to maintain the purchasing power of the fund for future beneficiaries. The long-term total return needed of the Foundation's portfolio is Consumer Price Index (CPI), plus the current spending policy rate, plus the Foundation's average administrative fee.

total assets BY YEAR



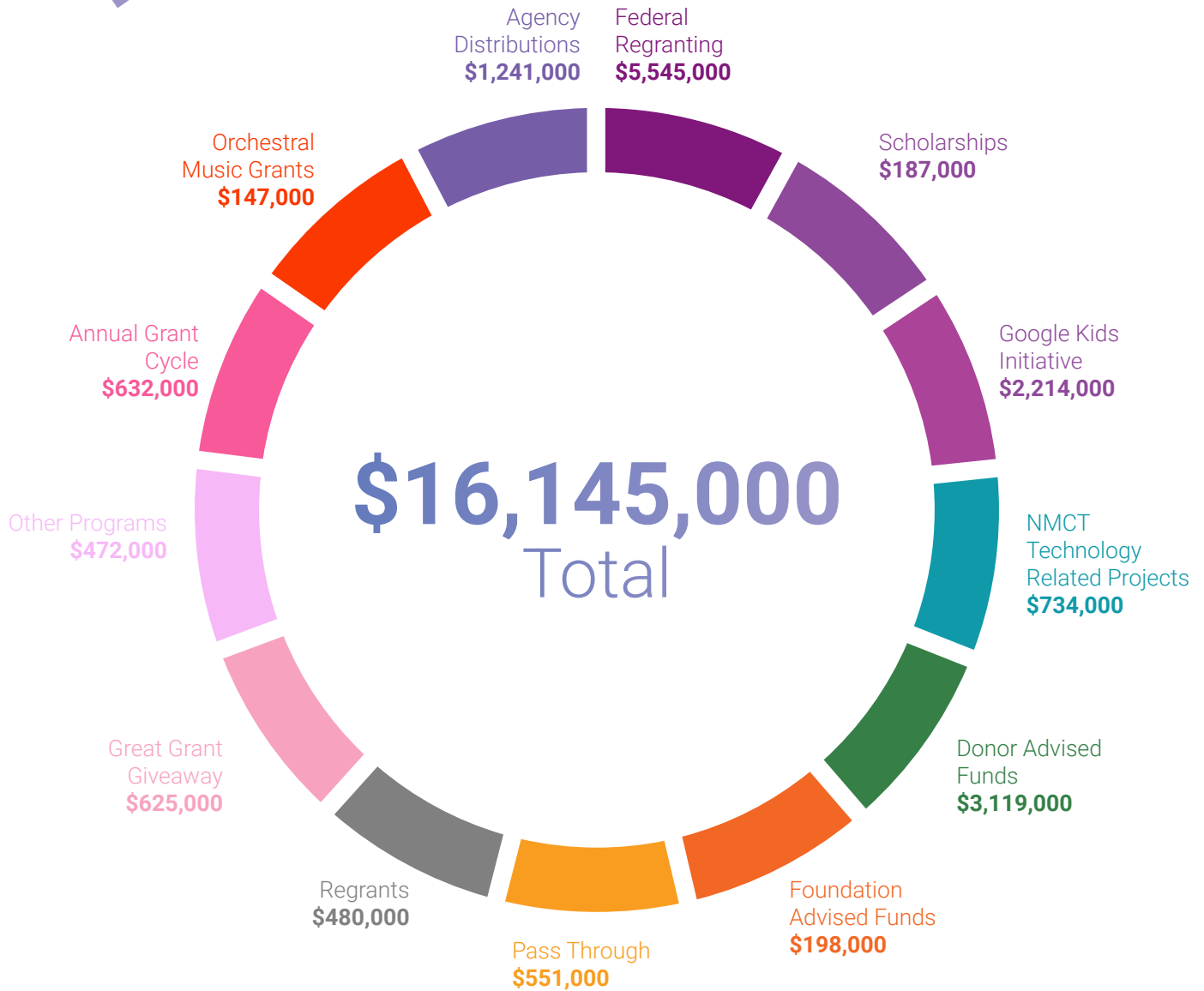
total contributions BY YEAR



total grants BY YEAR



overall grant DISTRIBUTIONS



annual grant cycle DISTRIBUTIONS



Impact INVESTING

The Foundation's Impact Investment portfolio has to date invested \$4,950,000 in the local economy in areas aligned with our broader vision, focused on the Greater Albuquerque Metropolitan Area (investments elsewhere in the state are permitted). While the purpose of this program is to generate financial returns through private equity investment and direct low-interest loans, we are also guided by social returns. These include stimulating entrepreneurial activity and economic development such as

- **the creation and retention of jobs that offer living wages and benefits;**
- **providing availability and access to affordable capital;**
- **increasing the supply of and improve access to affordable housing;**
- **enhancing the quality of life through the vitality of the downtown area;**
- **promoting a more vibrant community and encourage quality education opportunities.**

Impact investing is another tool the Foundation uses to bring significant new money into the greater Albuquerque area by leveraging and encouraging investment from outside the area, as well. Investing in local private equity

funds to support entrepreneurship and job creation has resulted in over 245 new jobs in Albuquerque area businesses since the inception of these funds. Encouraging access to capital through impact loans with two local financial institutions has generated over 4,400 business startup loans and pandemic recovery funding, including microloans via the Nusenda Credit Union Co-op Capital program for small entrepreneurs, and capital loans through DreamSpring, a nonprofit Community Development Financial Institution and US Small Business Administration lender.

The Foundation's portfolio also includes over \$2 million in real estate financing, which has been leveraged by partner institutions to invest over \$48.8 million. In 2023, the Foundation loaned the New Mexico Black Leadership Council \$250,000 to rehabilitate their newly purchased building in Albuquerque's International District. The Foundation is able to offer low interest and flexible loan terms to allow organizations to establish a firm financial footing without the restrictions of traditional loans.

emeritus BOARD MEMBERS

The Emeritus Board is composed of former Trustees who have demonstrated long and distinguished service to the Foundation. They have contributed significant and ongoing financial support to the Foundation as well.

**2023 Emeritus Trustees

*Remembered



John T. Ackerman



Carl Alongi**



Lee Blaugrund



Robert Bovinette



Curtis Brewer



Douglas M. Brown



Dr. Sue Brown



Victor J. Chavez



Bill Ebel**



Glen Fellows**



Ed Garcia



Robert M. Goodman*



María Griego-Raby



Karl Gustafson



Diane Harrison Ogawa



Cindy Johns



Ted Jorgensen**



James N. King



Shirley Leslie*



Gloria Mallory



Beverly McMillian



Steven K. Moise



Mary Poole*



Barry W. Ramo



Roberta Cooper Ramo



Jerry Roehl**



John L. (Jack) Rust*



John P. Salazar



Robert J. Stamm*



George Stanfield**



Jeff Sterba



Chet Stewart



Jennifer Thomas



Barbara Tryhall



Michael Walker



Julie Weaks Gutierrez
Posthumously*



Larry Willard*



Kevin Yearout



Ray Zimmer

board of TRUSTEES

Our Board of Trustees is composed of community and business leaders who share one goal: to fortify the well-being of the greater Albuquerque community.

Foundation Trustees are deeply committed to building a strong community and are an active and essential partner in mobilizing and stewarding resources to create equitable opportunity for all.

The following individuals served on the Board during 2023.



Abinash Achrekar
UNM Health Sciences Center



Emily Allen
Dekker/Perich/Sabatini Ltd.



Tom Antram
French Funerals & Cremations



Arellana Barela Levenson
Treasurer, Community Member



Beverly Bendicksen
Immediate Past Chair, Sandia Financial Consulting, LLC



Bob Bowman
Bowmania Productions



Brian Colón
Singleton Schreiber



Tom Daulton
Private Equity Investor



Michelle Dearholt
Nusenda Credit Union



Sanjay Engineer
FBT Architects



Monique Fragua
Indian Pueblo Cultural Center



Jason Galloway
UNM Health Sciences Center



Debbie Harms
Secretary, NAI Sun Vista



Rebecca Harrington
Community Member



Pam Hurd-Knief
Philanthropic Advisor



Marcus Mims
Chair, CliftonLarsonAllen LLP



Paul Mondragón
Bank of America Corporation



Linda Parker
Parker Center for Family
Business



Anne Sapon
Community Member



Charlotte Schoenmann
Community Member



Walter Stern
Modrall Sperling



Becky Teague
PNM Resources



Sara Traub
Pregenzer, Baysinger,
Wideman & Sale, PC



Esther Villas-Wingfield
Junior League of
Albuquerque



José Viramontes,
Chair-Elect, MediaDesk



Lori Waldon
KOAT TV

STAFF

Individuals below were employed during 2023.



Julie Aragon
Executive Assistant



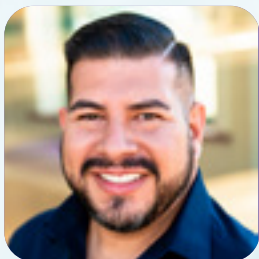
Sam Bicknell-Hernandez
Marketing & Development
Associate



Jeff Carr
Accountant & HR Senior
Associate



Clarissa Earl
Communications & Marketing
Manager



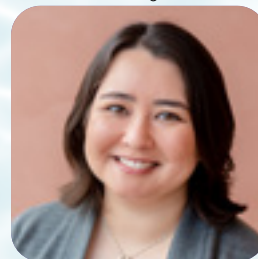
Dominic Garcia
Scholarship & Grants Senior
Associate



Danielle Griego
Governance & dEi Senior
Associate



Khia Griffis
Community Impact Director



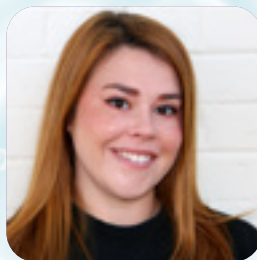
Kate Leung
Donor Development Senior
Associate



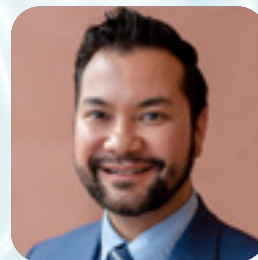
Marisa Magallanez
Chief Operations Officer



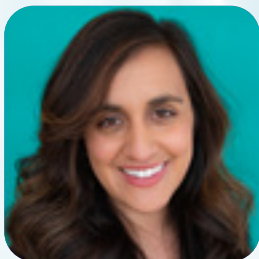
Kathy McDonald
Bookkeeping & Data Entry
Associate



Kelsey Martin
Development Manager



Juaquin Moya
Vice President of
Philanthropic Advising



Denise Nava Wyrick
Marketing & Development
Director



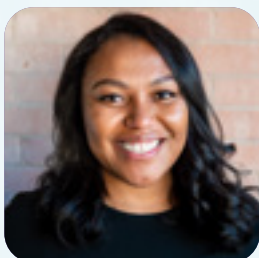
Tiffany Rawls
Finance Director



Randy Royster
President & CEO



Liana Schmader
Housing Stability Project
Manager



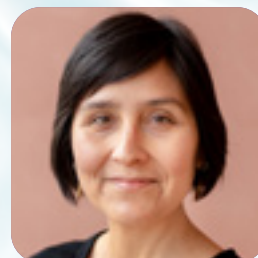
Letisha Spencer
Grants Senior Associate



Remi Ward
Donor Relations Senior
Associate



Nick Williams
CFO



Celia Yapita
Community Leadership
Director

support the foundation, **SUPPORT THE COMMUNITY!**

Giving to your local community foundation directly benefits nonprofits and programs that address local needs, creating a lasting impact. Your contributions help strengthen the community and support causes that matter most in your area. **How can you support the community?**



Individual Giving | *Turn What You Have Into Community Progress*

- **One-time gifts:** Donate cash, stocks or other assets.
- **Endowments:** Establish long-term support for causes you care about.
- **Existing funds:** Contribute to pre-existing funds aligned with your passions.
- **Areas of impact:** Direct donations toward our seven fields-of-interest benefiting Albuquerque.
- **Unrestricted Gifts:** Flexible support to address urgent needs and emerging opportunities as they arise.
- **Partners in Philanthropy:** Support day-to-day operations of the Foundation, and empower the capacity of staff.



Collective Impact | *Pool Your Donations with Others*

- **Future Fund:** A group of young leaders pooling resources to support local nonprofits. Membership starts at \$240/year.
- **Social Giving Club:** Members join to socialize and make a bigger impact through combined giving. Membership starts at \$1,000/year.
- **PRIDE Circle:** Supports Albuquerque's LGBTQIA+ community. Join at any level!



Planned Giving | *Develop a Charitable Giving Plan that Matches Your Interests*

- **Estate Gifts:** Establish a legacy by designating part of your estate for donation upon death.
- **Life Insurance:** Assign existing or new life insurance policies to the Foundation as the owner and beneficiary.
- **Retirement Accounts:** Support the Foundation's operations by donating directly from your IRA or pension plan.
- **Appreciated Stock:** Donate appreciated stock to benefit the community.

Questions? Contact Denise Nava, Marketing & Development Director, at denise@abqcf.org to learn how you can make a difference today!



Donate online at abqcf.org.

Our Mission

is to serve our community by mobilizing and stewarding resources to create equitable opportunity for all.

Our Vision

A strong community...

- Has a foundation built by and for all people, that works as a partner, ally and catalyst for a better future
- Works toward equity, justice and healing by addressing systems of oppression and harm
- Provides high quality educational opportunities without debt or barrier
- Gives everyone access to healthcare, affordable housing, secure & healthy food sources, and safe neighborhoods
- Has a rich, well-preserved history and an environmentally sustainable future
- Creates economic opportunities for all and ensures long-term economic prosperity
- Nurtures artistic and cultural development while sharing learning opportunities with all
- Builds a sense of belonging and helps all people achieve their personal definition of success
- This is the future we want to build.

Our Values

Trust

and we work to build relationships based in authenticity, actionable change, adaptability, and cultural humility.

Equity

and we will address ongoing injustice and work to change systems of oppression and harm.

Integrity

and we commit to providing high quality service with humility and respect.

Accountability

and we will be responsible for and transparent in all the ways we learn, strive, and adapt in our journey toward becoming our community's foundation.

PRODUCED BY ALBUQUERQUE COMMUNITY FOUNDATION

Marketing & Development Director: Denise Nava Wyrick

Communications & Marketing Manager: Clarissa Earl

Design: Hallee Nguyen with Matchbox Marketing

Copywriting and Editing: Kelly Koepke, Rachael Maestas and Amanda Sims

Photography: Hyunju Blemel, Animal Protection of New Mexico, Indian Pueblo Cultural Center, Globerunner Scholarship Fund, Goldenberg-Elder family and Working Classroom.

Corporate partners in PHILANTHROPY

Together, we're making a difference.

Corporate Partners in Philanthropy is a cherished program designed to foster community support through the Foundation. By involving Corporate Partners' employees in philanthropy through giving circles, events and grantmaking, we create a network of care and collaboration. This support is vital in enabling the Foundation to continue its meaningful work within the community.

Over the years, we've cultivated dynamic relationships with our Corporate Partners, creating unique, impactful experiences and special grantmaking programs that benefit everyone.

We're deeply grateful to all our 2023 Corporate Partners for your unwavering support and dedication to our community.

\$25,000 | Champion



\$15,000 | Community Builder



\$5,000 | Benefactor



\$2,500 | Partner

Contract Associates
New Mexico Gas Company
The Payroll Company

